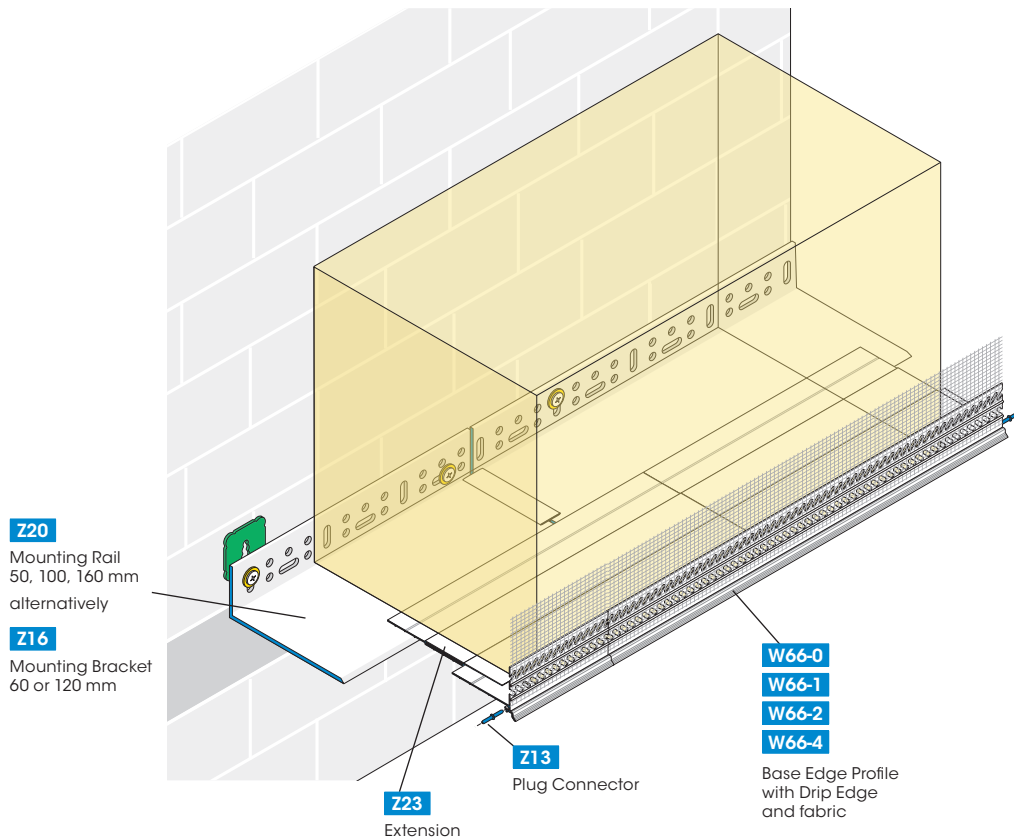


## APU Plastic Extension Z23 for Base Edge Profiles W66



The APU Extension Z23 made of plastic extends the outreach of the APU Base Edge Profiles W66 by 30 to 50 mm. In combination with the Base Edge Profile, two Extensions and the Mounting Rail Z20-160 mm insulation thicknesses up to 300 mm can be achieved. **Application with insulation thickness more than 160 mm must have a perimeter insulation preinstalled.**

To determine a suitable configuration, see the overview next page.

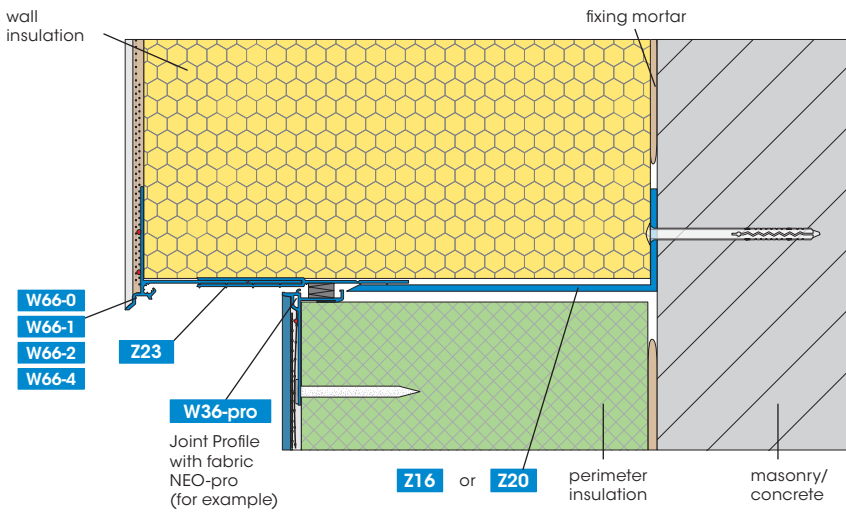
(For further information on the profiles W66, Z20 see the relevant brochures or visit us under [www.apu.ch](http://www.apu.ch))

**Available packed unit:**

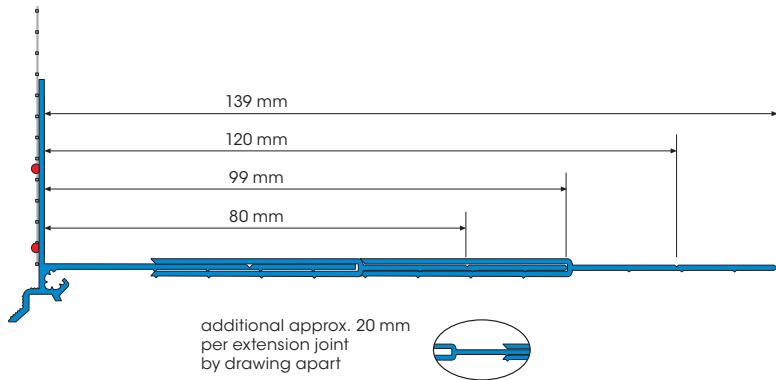
25 bars of 2.00 m = 50.00 m

## Mounting example

application with insulation thickness more than 160 mm must have a perimeter insulation preinstalled



## Possible extensions



## Example of insulation thickness 300 mm

a preinstalled perimeter insulation is required

