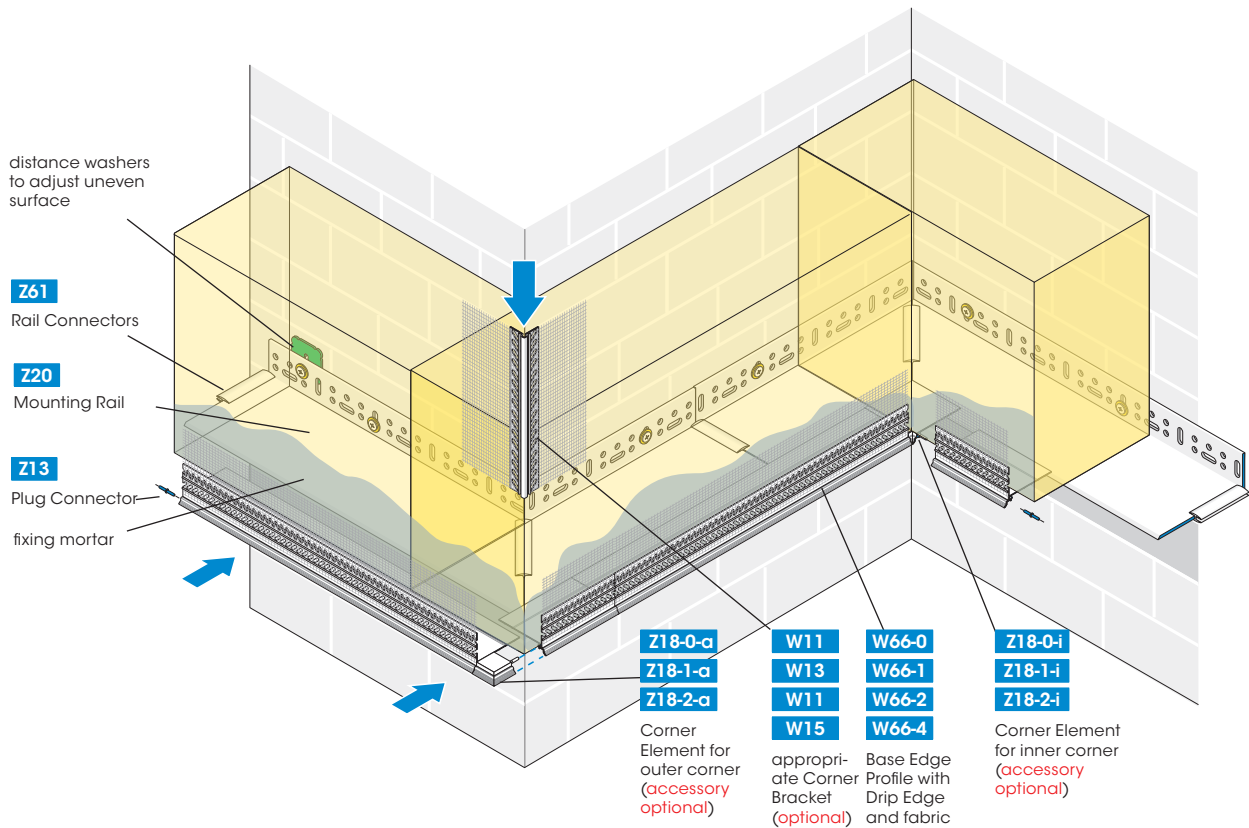


50/100/160

APU Mounting Rail Z20 for Base Edge Profiles W66



The APU Mounting Rail Z20, which is available in 3 different outreaches, forms along with the APU Base Edge Profiles W66 a closed surface bordering the ETIC system for insulation thicknesses of 50 to 300 mm (**application with insulation thickness more than 160 mm must have a perimeter insulation preinstalled**).

In order to plan a suitable configuration see the next page.

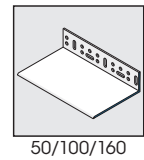
(For further information on the W66 profiles see the W66 brochures or visit us under www.apu.ch)

Available packed unit:

- Z20: 15 rails of 2.00 m = 30.00 m
- W66-0 to -4: 25 bars of 2.00 m = 50.00 m (optional)
- Z23: 25 bars of 2.00 m = 50.00 m (optional)

Application with insulation thickness more than 160 mm must have a perimeter insulation preinstalled.

Z20

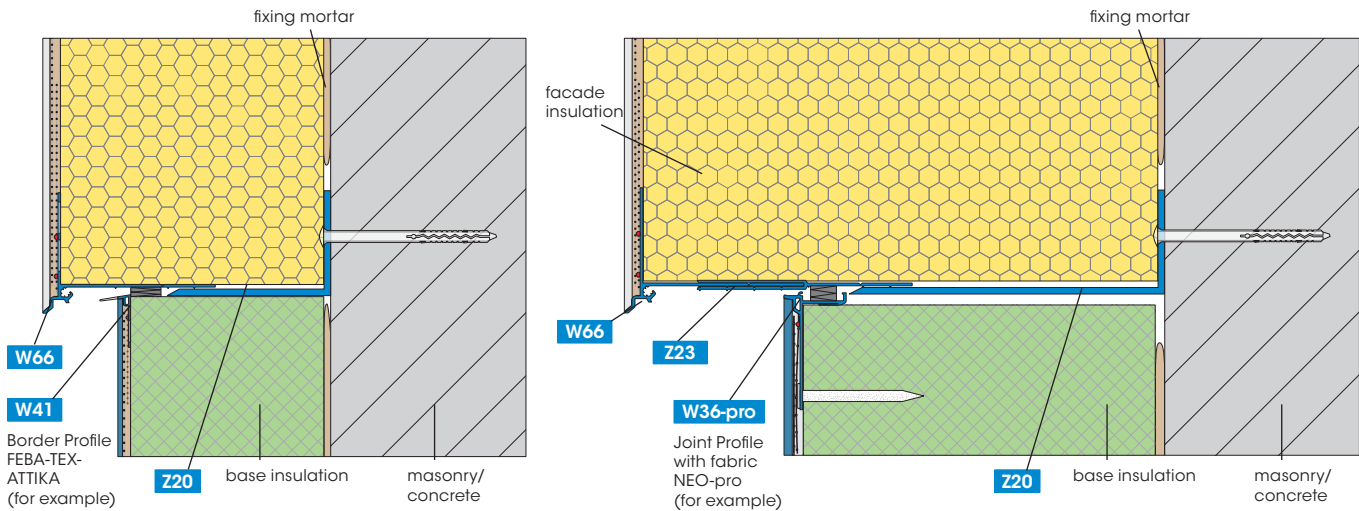


50/100/160

Application examples

Standard application (DS 50 to 200 mm)
application with insulation thickness more than 160 mm must have a perimeter insulation preinstalled

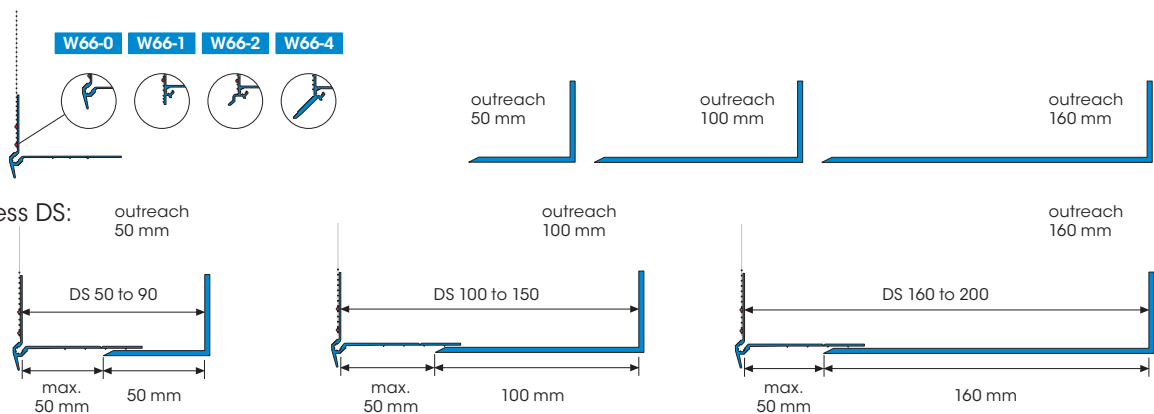
Passive house construction (DS 200 to 300 mm)
a preinstalled perimeter insulation is required



Configuration for standard applications (DS 50 to 200 mm)

profile selection: Base Edge Profiles W66

Mounting Rail Z20



Configuration for passive house application (DS 200 to 300 mm)

profile selection: Base Edge Profiles W66

Extension Z23 (2x)

Mounting Rail Z20

