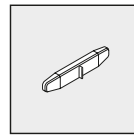
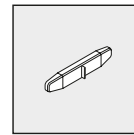
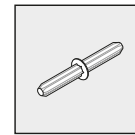


Accessories

Z13

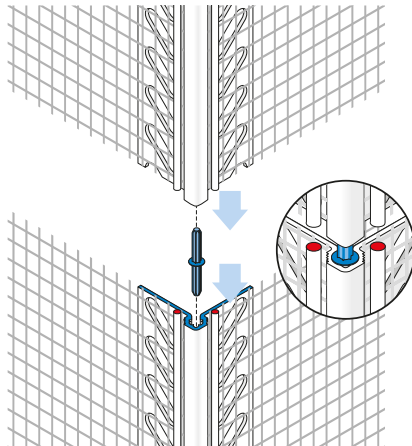
Z14

Z14



APU Plug Connectors for Profiles

for thermal insulation composite systems



To create a secure, flush installation of APU profiles the APU Z13, Z14 or Z15 Plug Connectors are inserted into the hollow space at the corresponding profile's end up to the flange and the next profile is slipped over the Plug Connector.

<p>Z13 Plug connector round</p>	suitable for:						
<p>A23 Corner angle STABLO</p>	<p>W11 Corner bracket with fabric DUO-TEX flush/imprinted</p>	<p>W12 Corner bracket with fabric DUO-TEX scratched plaster</p>	<p>W15 Corner bracket with fabric STABLO 8, 11, 17 mm</p>	<p>W40-0 Border profile DROP-TEX-ZERO drip edge</p>	<p>W40-1 Border profile DROP-TEX-UNO straight</p>	<p>W40-2 Border profile DROP-TEX-DUE offset</p>	<p>W40-3 Border profile DROP-TEX-TRE transparent drip edge</p>
<p>W40-4 Border profile DROP-TEX-QUATTRO scratched plaster</p>	<p>W45-8 Sheet metal connecting profile FIN-TEX-MINI</p>	<p>W45-11 Sheet metal connecting profile FIN-TEX</p>	<p>W51 Expansion joint profile DUO-TEX corner</p>	<p>W52 Expansion joint profile DUO-TEX plane</p>	<p>W60 Connecting profile SOLI-TEX drip edge</p>	<p>W61 Base rail SOLI-TEX drip edge, bonded</p>	<p>W61-0 Base rail SOLI-TEX-ZERO drip edge, plugged</p>
<p>W61-1 Base rail SOLI-TEX-UNO straight, plugged</p>	<p>W61-2 Base rail SOLI-TEX-DUE offset, plugged</p>	<p>W61-4 Base rail SOLI-TEX-QUATTRO scratched plaster, plugged</p>	<p>W62-0 Clasp-on profile SOLI-TEX-ZERO with drip edge</p>	<p>W62-1 Clasp-on profile SOLI-TEX-UNO straight</p>	<p>W62-2 Clasp-on profile SOLI-TEX-DUE offset</p>	<p>W62-4 Clasp-on profile SOLI-TEX-QUATTRO scratched plaster</p>	<p>W64-0 Base clasp-on profile REPO-TEX-ZERO drip edge</p>
<p>W64-1 Base clasp-on profile REPO-TEX-UNO straight</p>	<p>W64-2 Base clasp-on profile REPO-TEX-DUE offset</p>	<p>W64-4 Base clasp-on profile REPO-TEX-QUATTRO scratched plaster</p>	<p>W66-0 Base edge profile SOKA-TEX-ZERO drip edge</p>	<p>W66-1 Base edge profile SOKA-TEX-UNO straight</p>	<p>W66-2 Base edge profile SOKA-TEX-DUE offset</p>	<p>W66-4 Base edge profile SOKA-TEX-QUATTRO scratched plaster</p>	<p>W67-2 Base edge profile SOKA-FIX</p>
<p>W80-08 Clasp-on profile for plaster base board 8 mm</p>	<p>W80-10 Clasp-on profile for plaster base board 10 mm</p>	<p>W80-12 Clasp-on profile for plaster base board 12 mm</p>	<p>W80-20 Clasp-on profile for plaster base board 20 mm</p>				

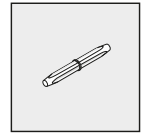
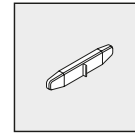
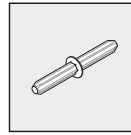
Z13-Z14/F34/HF-KT/01.21 subject to changes without notice



Z13

Z14

Z15



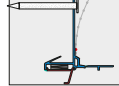
Z14



Plug connector
small

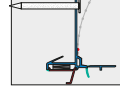
suitable
for:

W36-pro



Joint profile with
fabric
NEO-pro

W36-plus



Joint profile with
fabric
NEO-plus

W41



Border profile
FEBA-TEX-ATTIKA

W42



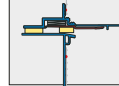
Border profile
FEBA-TEX-UNI

W43



Border profile
FEBA-DUO-TEX

W58



Slide bearing profile
PUR-FIX

W81



Joint flank profile

Z15



Plug connector

suitable
for:

W46



Sheet metal
connecting profile
PUR-FIX

Delivery form

the Plug Connectors are enclosed with
the profile packs in sufficient quantity