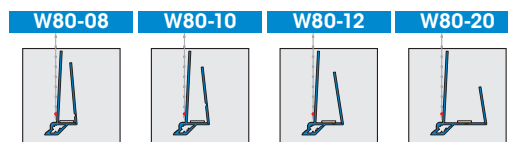
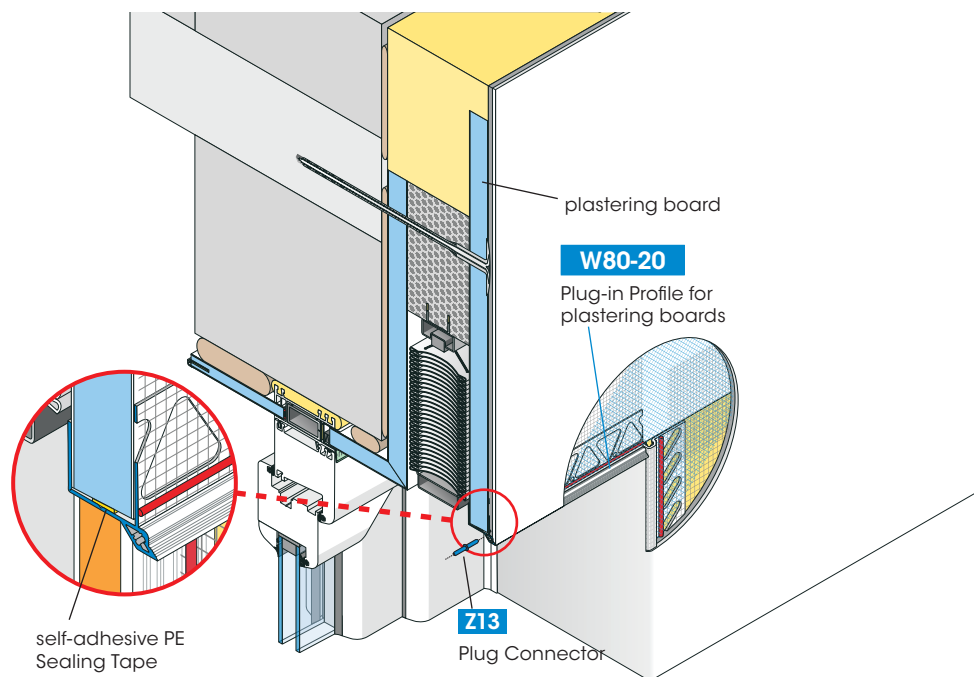


Profiles for external thermal insulation composite systems "ETICS"



APU Plug-in Profile for Plastering Boards



The plastic APU Plug-in Profile W80 for plastering boards is available with receptacles of 8, 10, 12 and 20 mm and used for shutters/lamellar blind boxes as plaster border profile.

The profile W80 is equipped with a welded fabric part that is plastered overlapping with the facade fabric. Prolonging profiles can be flush connected using Plug Connectors. To fix to the plastering boards, the flank of the profile is prestressed and additionally, a self-adhesive PE Sealing Tape is applied.

To improve plaster adhesion, the profile is grooved and perforated, 2 plaster level bars simplify applying filler and final plaster. The stepped Drip Edge is used for waterguidance and forms a neat, exact plaster edge.

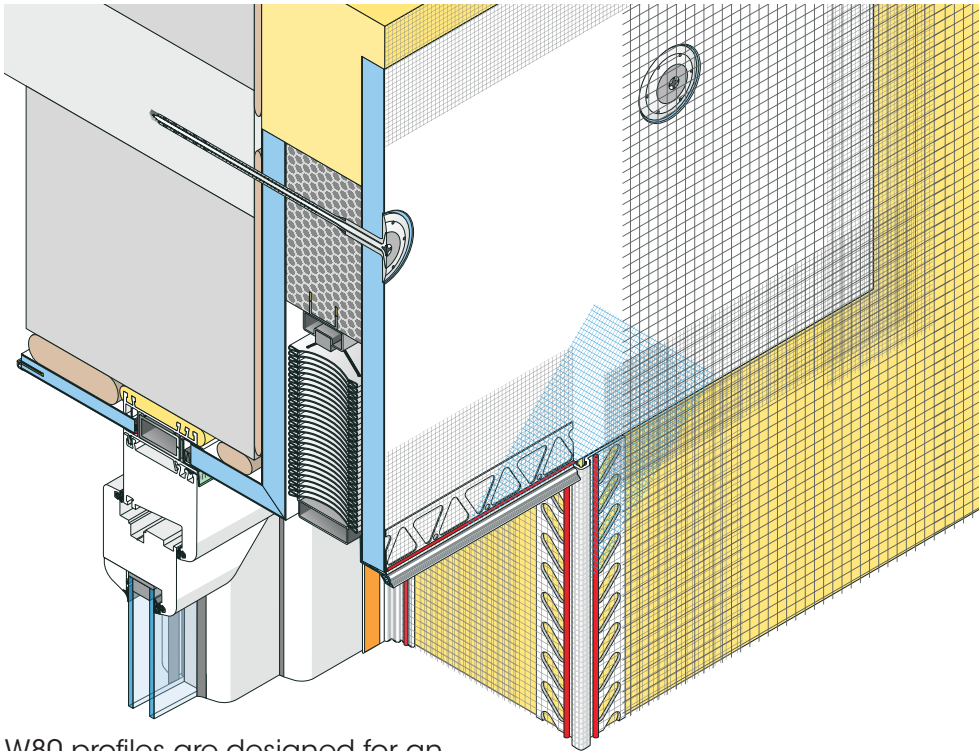
**Available in packed units:**

25 bars of 2.00 m = 50.00 m

For detailed information see technical information sheet or visit us on the Internet at [www.apu.ch](http://www.apu.ch).

## Application examples

### Lamellar blind box



W80 profiles are designed for an entire plaster thickness of 7 mm. To ensure an even plaster border, the attached profiles, such as corner brackets or reveal boards with integrated border profiles, are aligned in accordance with the W80 profile flush to the plaster border.

### Hidden roller blinds

