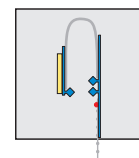
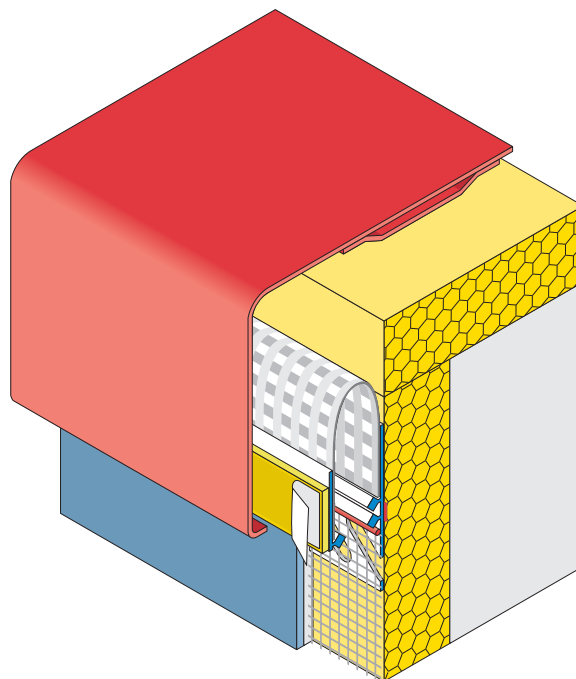


Profiles for external thermal insulation composite systems "ETICS"

W55



APU Connecting Profile ATTIKA



Thermal insulation composite systems (ETICS), which are guided towards the attika metal cover or the roof edge border, require a sealed transition between the thermal insulation composite systems and the sheet metal joint. Such transitions can be easily and securely established with the APU Connecting Profile ATTIKA.

The profile consists of a combination of two proven APU Flat Profiles, which are joined together by a fabric reinforced Sealing Foil. The Flat Profile provided with the fabric part is fixed with fixing mortar to the insulation board, the narrow Flat Profile provided with a strong self-adhesive PE Sealing Tape is glued into the fold of the sheet metal on the opposite side.

In the contact area between two profiles, the projecting part of the Sealing Foil overlaps with the Sealing Foil of the following profile and is additionally sealed with adhesive tapes after installation.

Available packed unit:

Attika Joint Profile: 25 bars of 2.00 m = 50.00 m
Adhesive foil components: 120 x 80 mm

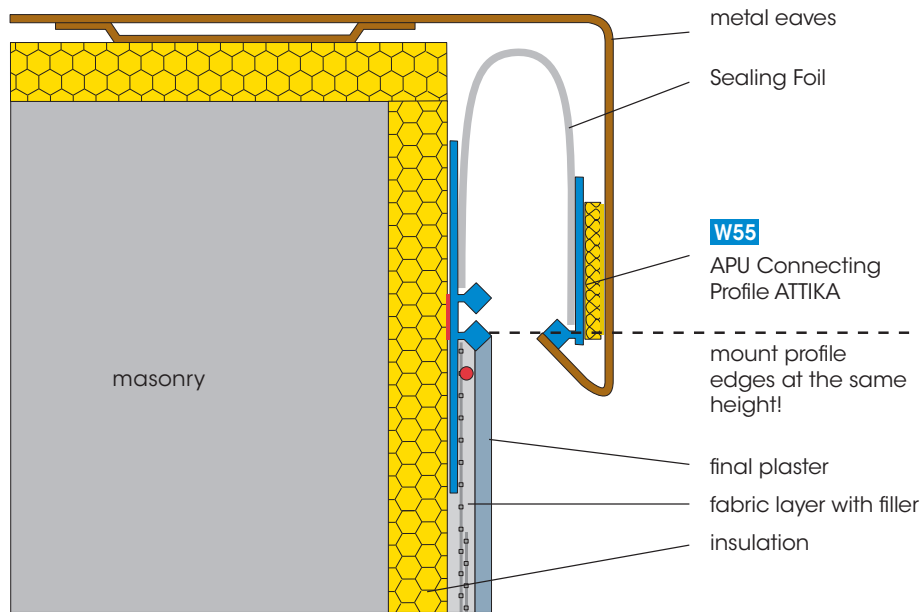
Additional advantages

- sealed Attika joint
- easy to process
- neat plaster border
- flush edges
- well-directed water guiding

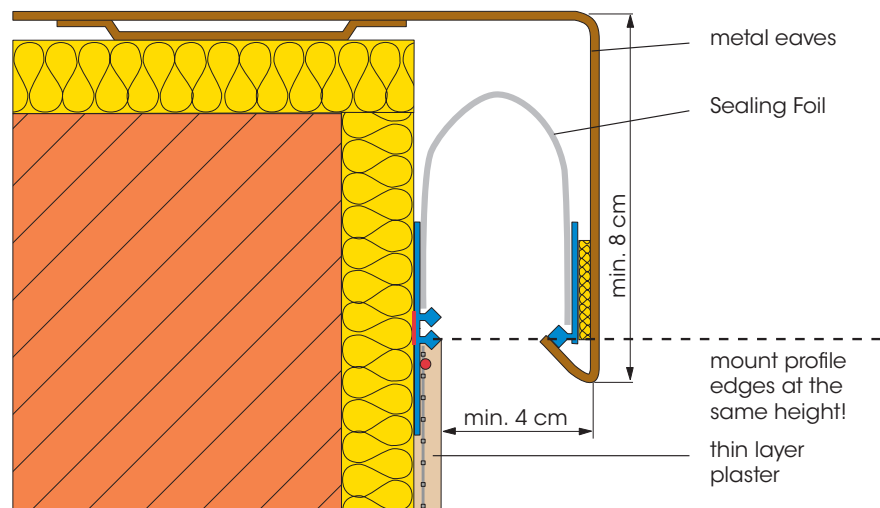
To realize inner/outer corners prefabricated Corner Elements can be made with the product enclosed instructions (example see next page).

For detailed procedure information contact your manufacturer of plasters and systems.

Construction example



Application example in thin plaster



For detailed information see technical information sheet or visit us on the Internet at www.apu.ch.

