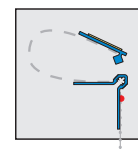
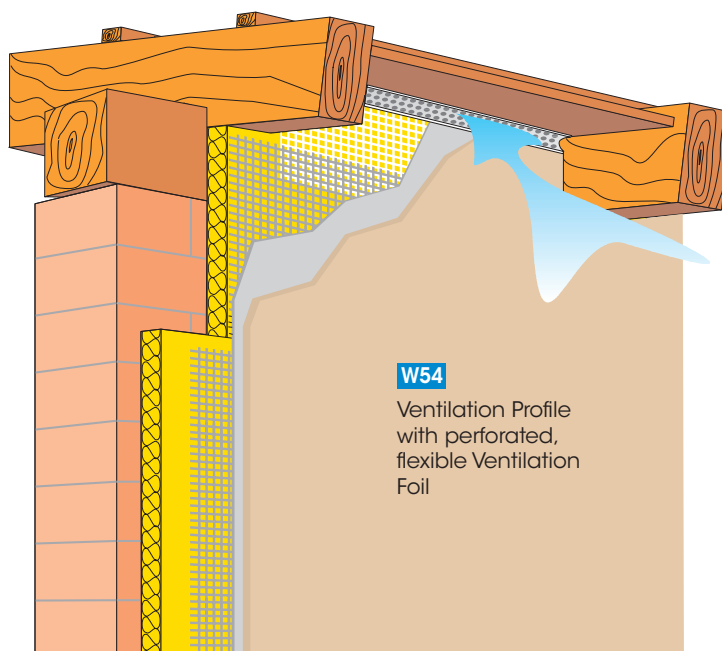


Profiles for external thermal insulation composite systems "ETICS"

W54



APU Ventilation Profile VARIO



The APU Ventilation Profile VARIO is a combined profile that can be used for all ranges of insulation thickness. A white flexible plastic Ventilation Foil joins a Flat Profile on one side with a Corner Bracket Profile which is provided with a plaster level bar and a fabric part. The **Ventilation Foil** has perforations according to the standard DIN 4108 Part 3 to ensure passage of air.

The **Flat Profile** to be mounted on the roof (see next page) is equipped with a self-adhesive tape, adjusted between the rafters and glued beneath the roof cladding, then fastened mechanically. The **Corner Bracket Profile** aligning with the wall is embedded into fixing mortar on the edge of the upper most insulation board. The fabric filler is done with overlapping fabrics. The final plaster is leveled with the plaster level bar of the Corner Bracket Profile for flush plaster edges.

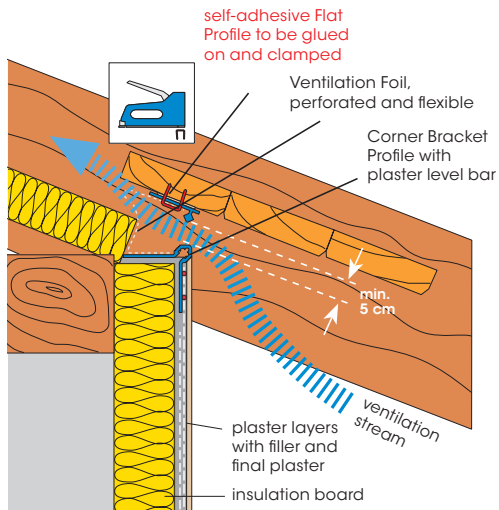
Also suitable for rear ventilated facades and similar applications.

Available packed unit:

20 bars of 2.10 m = 42.00 m

For detailed information see technical information sheet or visit us on the Internet at www.apu.ch.

Application example roof ventilation



Also suitable for rear ventilated facades

Note:

The Flat Profile must be fastened mechanically in addition to the adhesive tape (e.g. by staples or nails). Minimum distance between the Flat Profile and the Corner Bracket Profile must be 5 cm.

Detailed information is available in the Technical Data Sheet.

Mounting the Roof Ventilation Profile

1. Trim the Roof Ventilation Profile with shears to exact rafter distance. Remove the protective paper from the self-adhesive tape on the Flat Profile, glue the Flat Profile on the dry and dust-free roof cladding and fasten it at least at every 15 cm mechanically (staples or nails).
2. Apply fixing mortar on the upper edge of the insulation board and spread it over the insulation board regarding the width of the fabric part. Press the Corner Bracket Profile into the mortar.
3. Embed the fabric part with filler and allow it to stiffen.
4. Work the fabric layer filler aligning with the lower plaster level bars and draw it over the fabrics with facade fabrics overlapping. After the prescribed idle time apply the final plaster, level it along the outer plaster level bar and rub finish.

