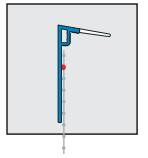
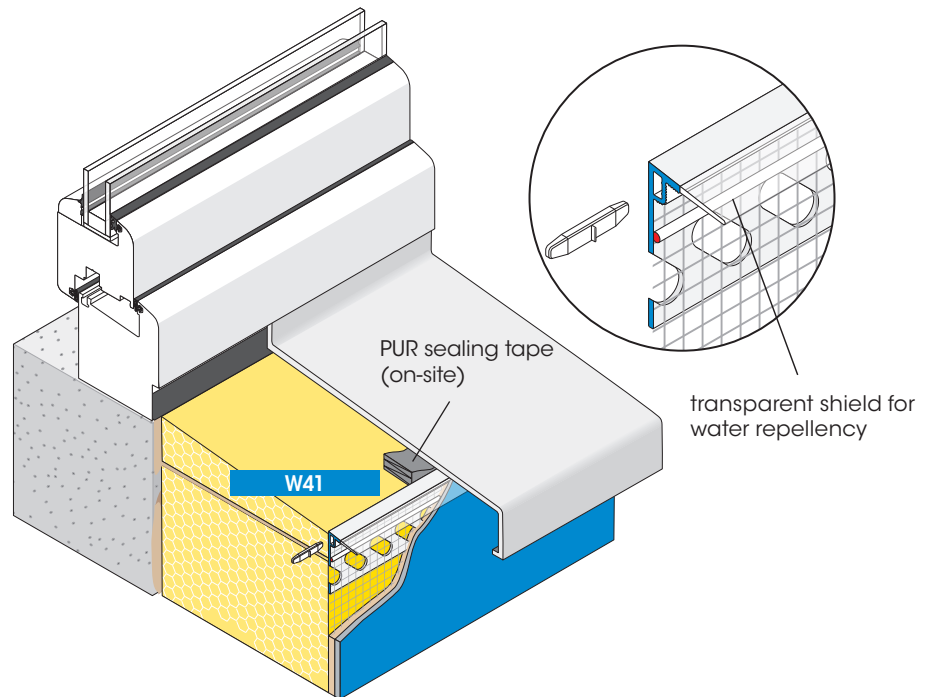


Profiles for external thermal insulation composite systems "ETICS"

W41



APU Border Profile FEBA-TEX-ATTIKA
with soft, transparent water shield



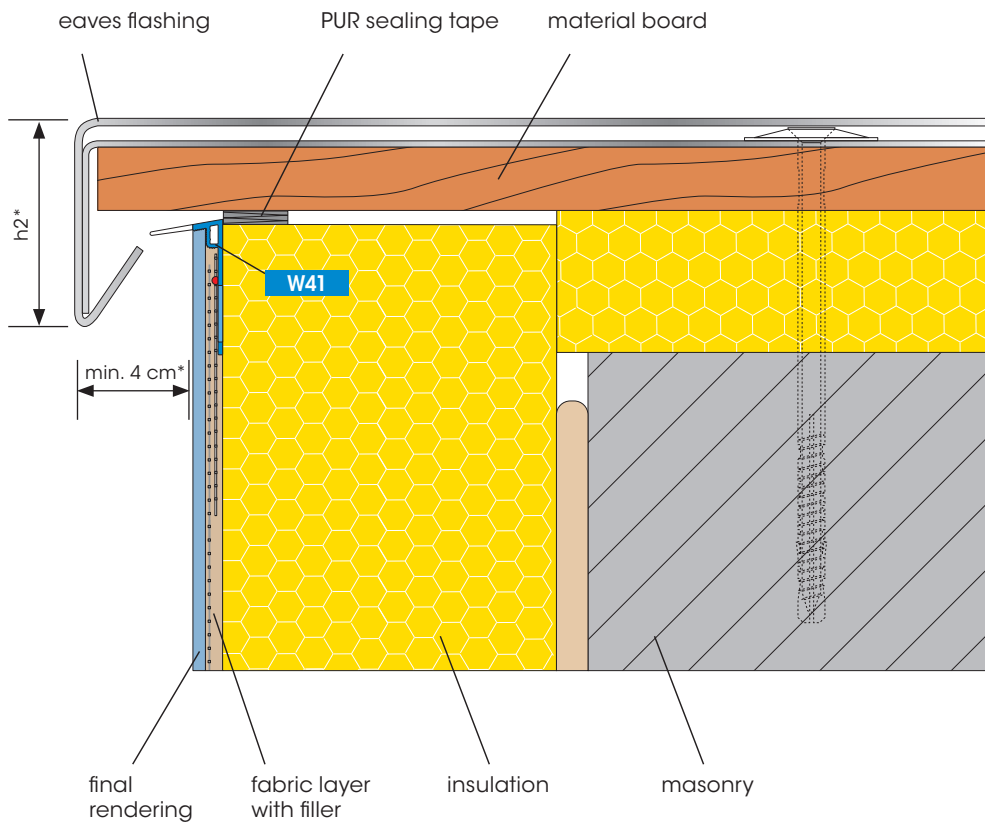
The border profile FEBA-TEX-ATTIKA forms a clean plaster finish under the window sill, in Attic regions behind sheet metal cladding or similar applications.

The profile is equipped with a fabric part of 12.5 cm wide, welded onto the perforated profile bar with one-sided overhang lengthways. Two profiles are aligned flush and joined together in the contact area with plug connectors. The soft and transparent shield for water repellency allows well directed water guidance.

Available packed unit:
15 bars of 2.00 m = 30.00 m

For detailed information see technical information sheet or visit us on the Internet at www.apu.ch.

Application example Attic



Other advantages

- easy to handle
- clean plaster finish
- exact edges
- water repellency

*) follow the guidelines for Plaster Joints to Metal, External Thermal Insulation and ETIC-Systems.