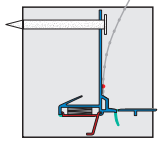
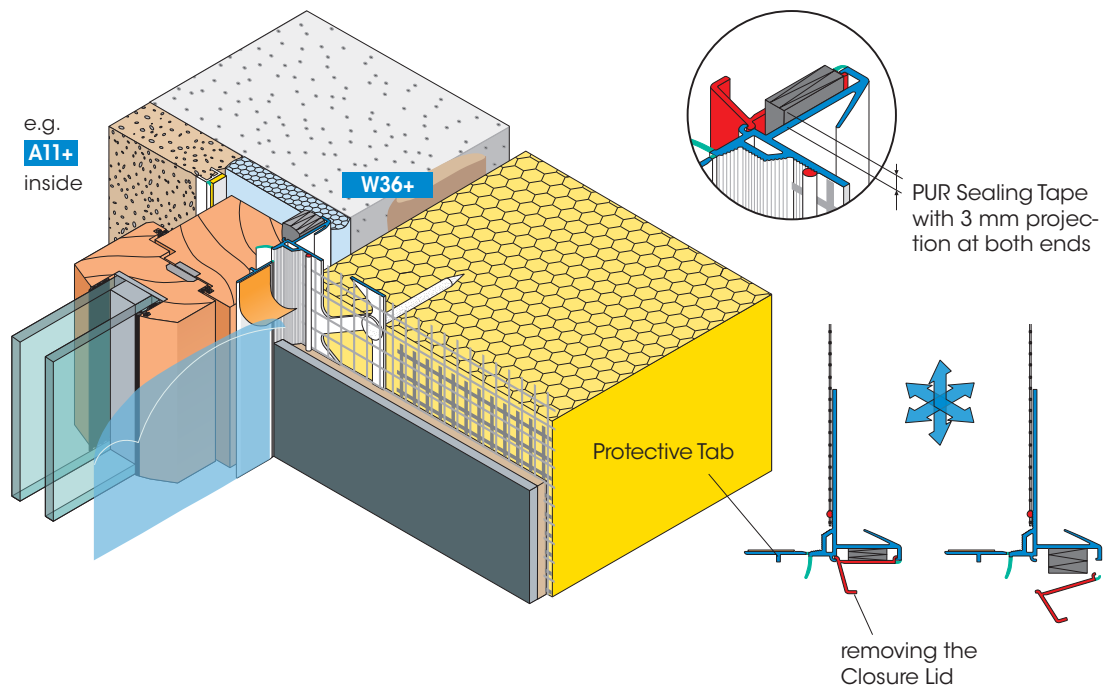


Profiles for external thermal insulation composite systems "ETICS"

W36-plus



APU Joint Profile with fabric NEO-plus
with Protective Lip



The Joint Profile with fabric NEO-plus is used for plaster joints in ETIC systems where bigger equalization movements are expected and when gluing on the window frame is not possible or not desired.

The profile is aligned dry, without fixing mortar along the window frame and fixed in position with **the APU Plastic Nail Z21 - behind the fabric part and to the insulating boards (4 nails per meter)**. The profile is equipped with an expanding PUR Sealing Tape, which is released by tearing off the Closure Lid. The fabric part of 12.5 cm width is welded onto the profile, the TPE Protective Lip is co-extruded.

The Joint Profile with fabric NEO-plus is also suitable for retrofitting the window (hidden subframe method). Therefore the profile can be completely plaster finished before mounting the window (see next page). In this case, the Closure Lid remains closed until the window is in place to be mounted.

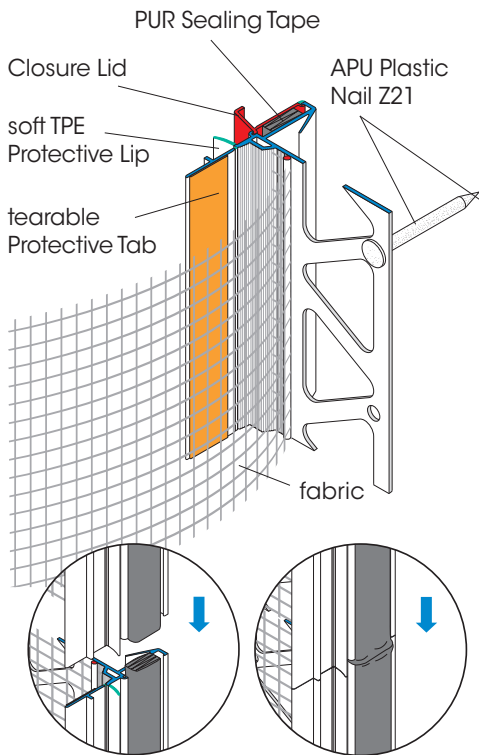
Available packed unit:

25 bars of 2.40 m = 60.00 m

For detailed information see technical information sheet or visit us on the Internet at www.apu.ch. The most up-to-date APU-selection criteria are to be adhered to.

APU AG

Processing instructions



Projecting PUR Sealing Tape acts as sealing material between two profiles.

Application of NEO-plus in hidden subframe method (retrofitting window)

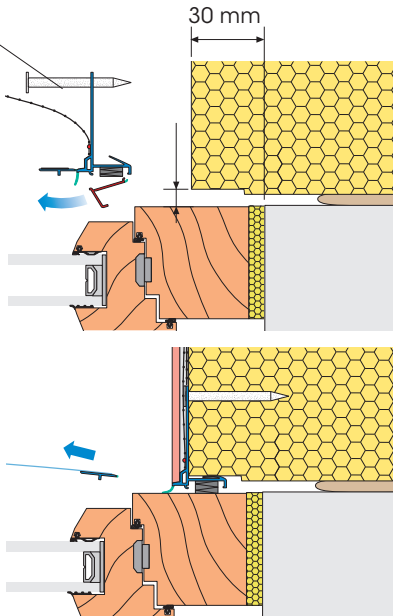
The window is mounted after applying the plaster. The Closure Lid is removed only just before mounting the window.

W36-plus corner joints

Corner joints of the profiles must be cut to mitre (Mitre-cutting Shears Z11 are useful). To overlap the joining fabric parts a fabric bracket has to be applied. For additional instructions see the manual supplied with the products.



Remove Closure Lid, insert the profile, fold out fabric, align the profile and fix it with the Plastic Nails to the insulating board, apply fabric filler and embed the fabrics.



Remove the Protective Tab after finishing of plasterworks.

