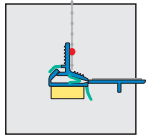


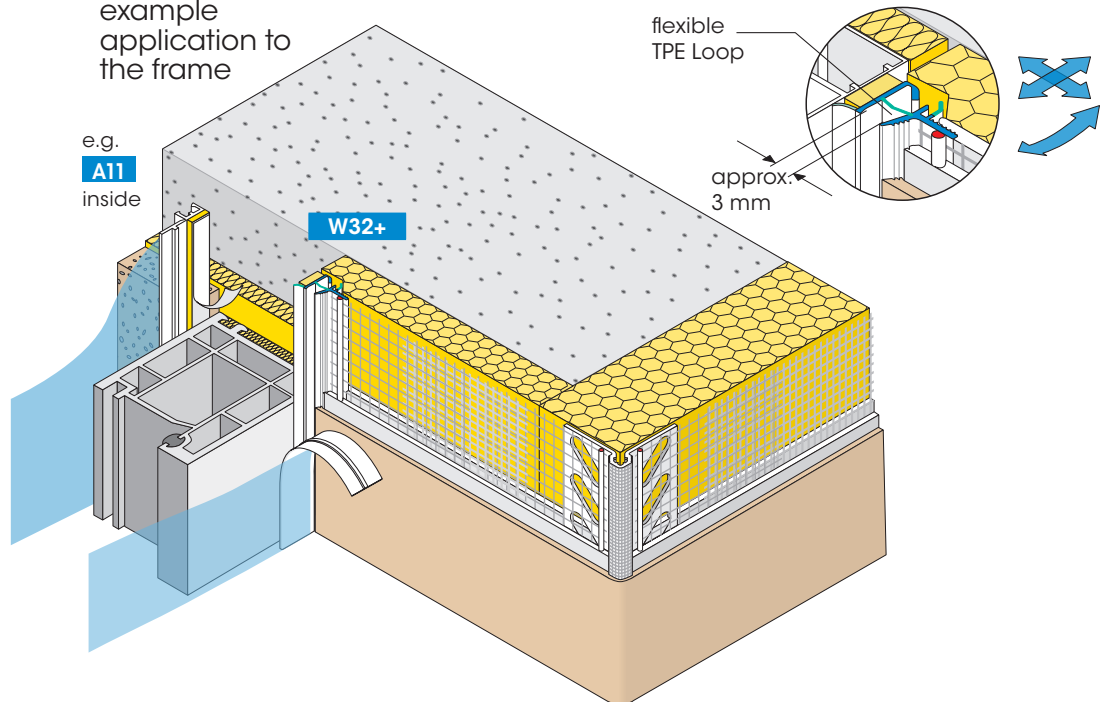
Profiles for external thermal insulation composite systems "ETICS"

W32-plus



APU Joint Profile with fabric MILANO-plus with TPE Loop and Protective Lip

example application to the frame



The Joint Profile with fabric MILANO-plus is intended for ETIC systems with deep insulation reveals, insulation thicknesses up to 160 mm and windows aligned with the masonry.

The Joint Profile with fabric is equipped with a flexible, co-extruded TPE Loop which is released by tearing off the Protective Tab. Dynamic component movements resulting from deformation and expansion are buffered by the TPE Loop. The profile is provided with a welded on fabric part. The front edge is arched and grooved to form a flush joint with the plaster. The profile is additionally equipped with a soft TPE Protective Lip. The sealing is enabled by the self-adhesive PE Sealing Tape. The removable Protective Tab is equipped with a self-adhesive tape to take up the on-site protective foil.

Component testing according to ift Test report No. 10428679.

Available packed unit:

25 bars of 1.40 m = 35.00 m
25 bars of 2.40 m = 60.00 m

For detailed information see technical information sheet or visit us on the Internet at www.apu.ch. The most up-to-date APU-selection criteria are to be adhered to.