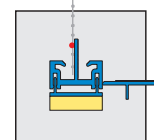
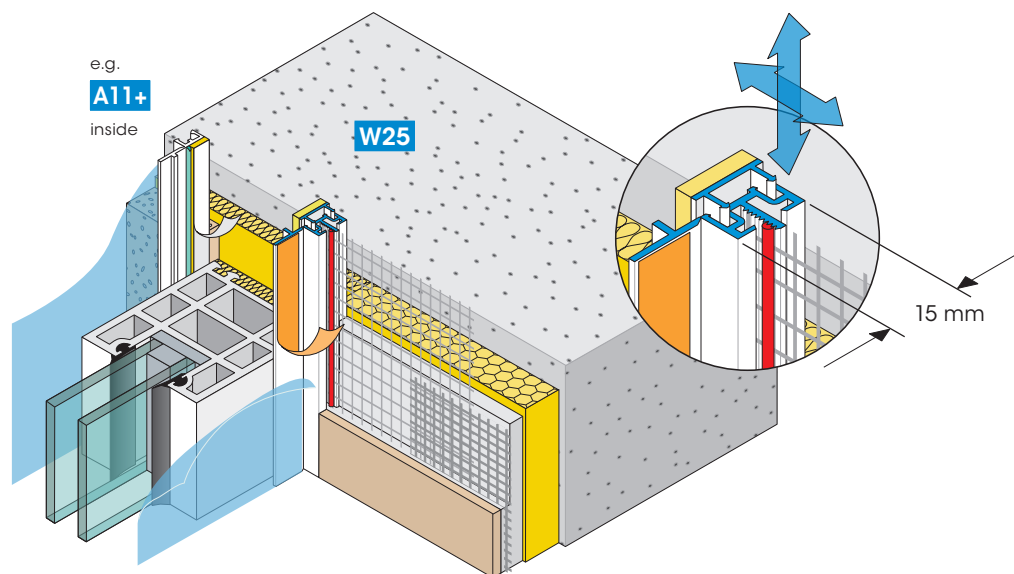


Profiles for external thermal insulation composite systems "ETICS"

W25



APU Telescopic Joint Profile with fabric UNIVERSAL plaster joint to large-sized windows, window frontages, door systems and similar component parts $\leq 10 \text{ m}^2$



The Telescopic Joint Profile with fabric is intended for thermal insulation composite systems with thick plasters and up to 160 mm insulation thickness where bigger movements are expected, especially for large-sized window/door systems up to 10 m^2 . The profile is suitable also for filled bricks.

The telescopic profile is horizontally and vertically flexible as one profile part is inserted into the other. The profile is driving rain proof and moves during strong wind/suction loads. A thick self-adhesive PE Sealing Tape ensures permanent sealing. The Protective Tab holds the on-site protective foil during plastering/painting work.

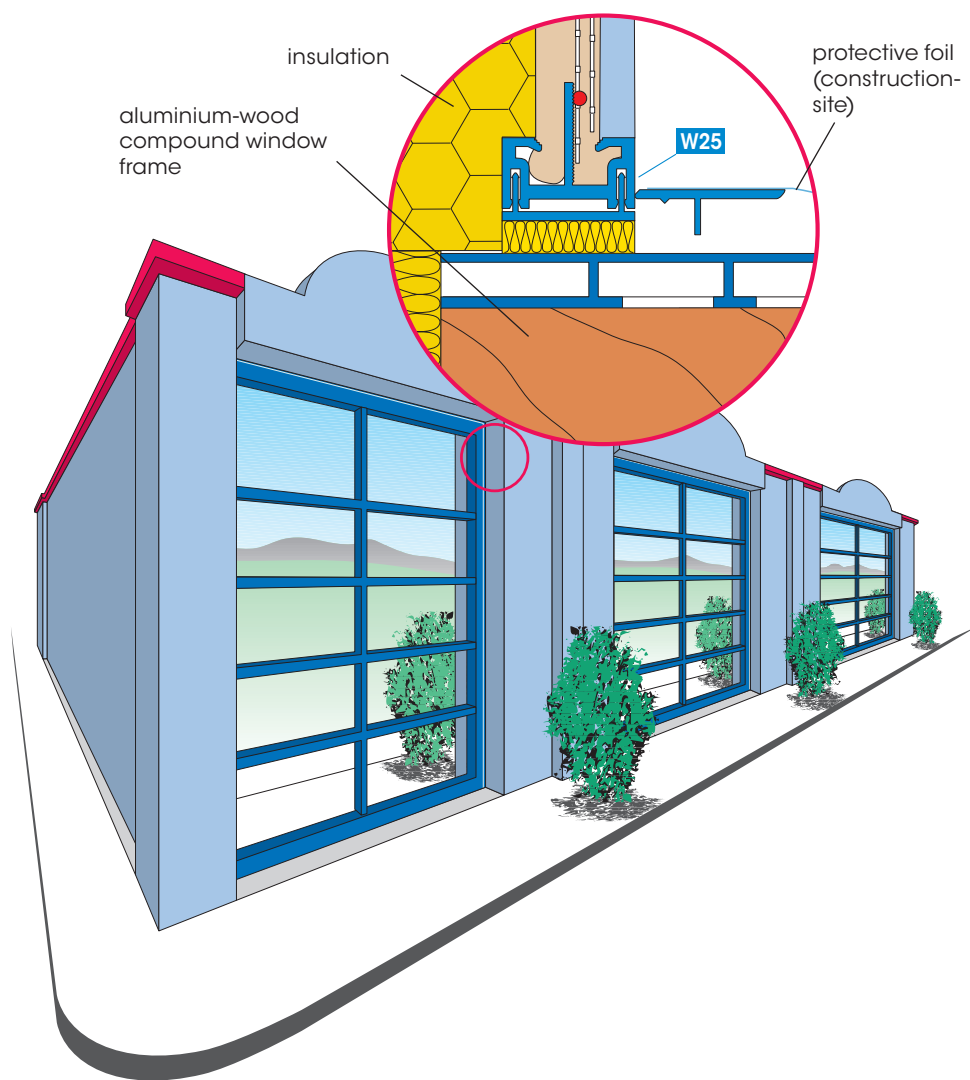
Driving rain proof as per test certification EMPA No. 166 730/1.

Available packed unit:

25 bars of 2.40 m = 60.00 m

For detailed information see technical information sheet or visit us on the Internet at www.apu.ch. The most up-to-date APU-selection criteria are to be adhered to.

Application example large window system



APU[®] APU[®] APU[®]