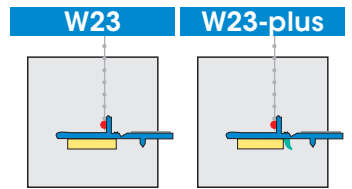
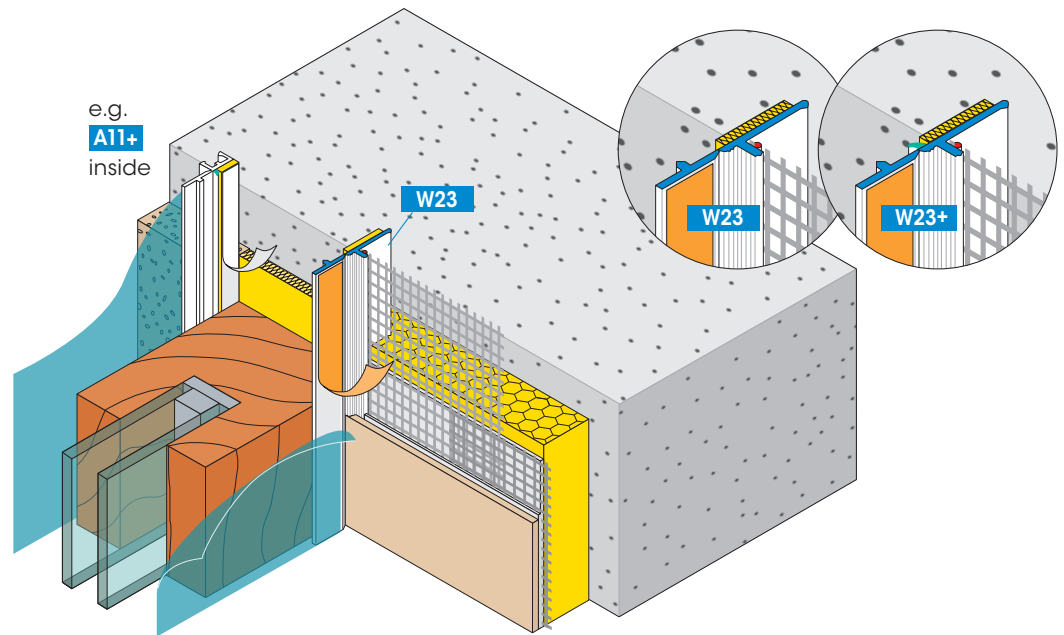


Profiles for external thermal insulation composite systems "ETICS"



APU Joint Profile with fabric **STANDARD-UV** plaster joint with fabric to windows, doors and similar component parts



Outer walls with thermal insulation composite systems require inside and outside sealed and secure plaster joints to doors, windows and other component parts.

The APU Joint Profile with fabric STANDARD-UV (and STANDARD-UV-plus) with self-adhesive PE Sealing Tape ensures a permanent UV-resistant movement joint. The profile forms a permanent joint between the fabric filler and the component parts. For plastering work, a protective foil is pressed onto the self-adhesive Protective Tab. A neat plaster border is the result upon removing the Protective Tab.

The Joint Profile with fabric is resistant to driving rain according to test certification EMPA No. 173557.

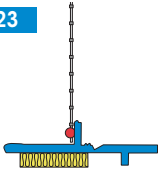
Type: • W23 for filler systems
• W23+ with a soft Protective Lip (otherwise the same as W23)

Available packed unit:

25 bars of 1.40 m = 35.00 m
25 bars of 2.40 m = 60.00 m

see also next page

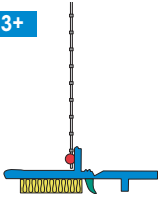
W23



Joint Profile with fabric

STANDARD-UV
for fine plaster

W23+



Joint Profile with fabric

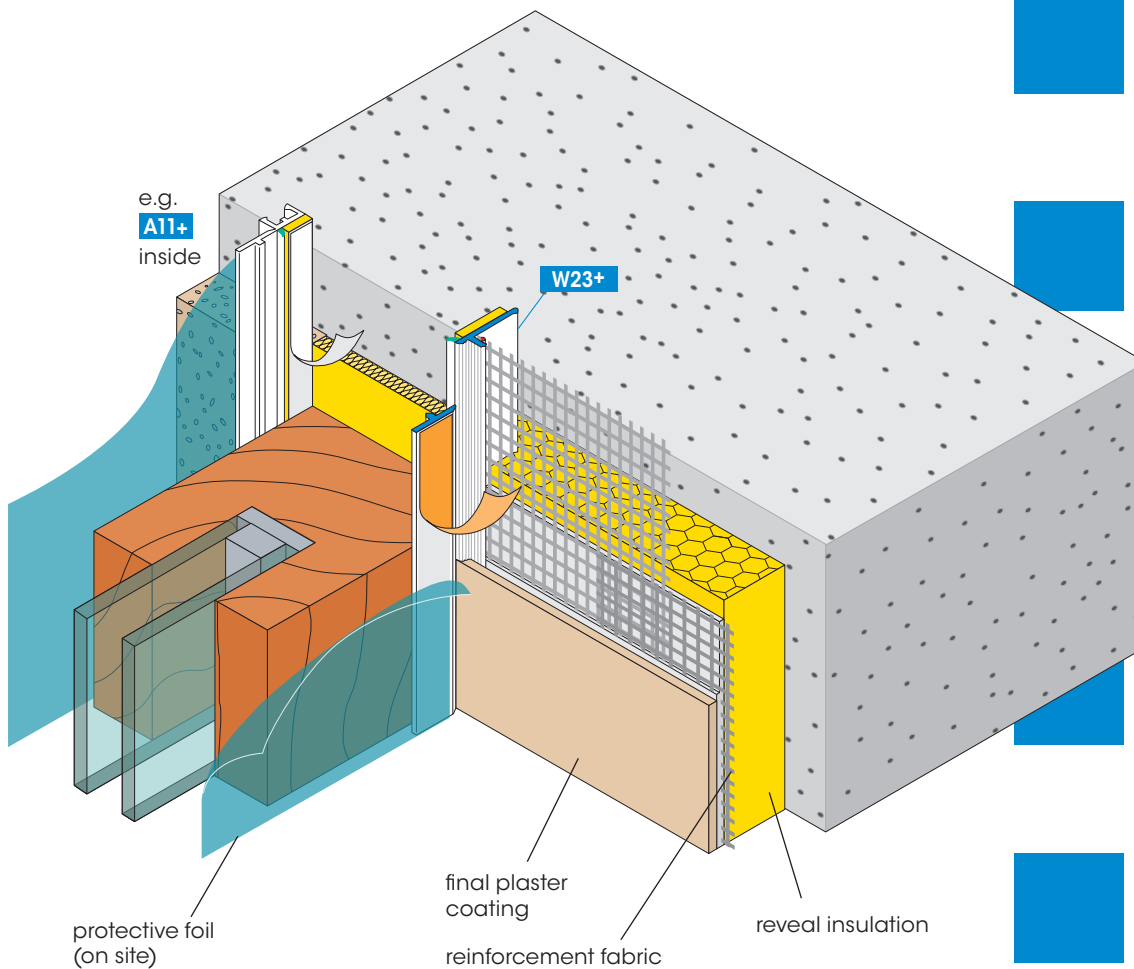
STANDARD-UV-plus
for fine plaster

Other advantages

- thermal separation
- reduced noise transmission
- no additional gap sealing
- no additional adhesive tapes
- no scratching of frames
- maintenance-free joint
- recyclable plastic
- joints sealed against driving rain
- safe to process

Application example

Joint Profile with fabric
STANDARD-UV-plus



For detailed information see technical information sheet or visit us on the Internet at www.apu.ch. The most up-to-date APU-selection criteria are to be adhered to.

APU AG

APU[®] APU[®] APU[®]