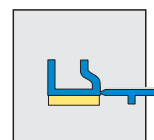


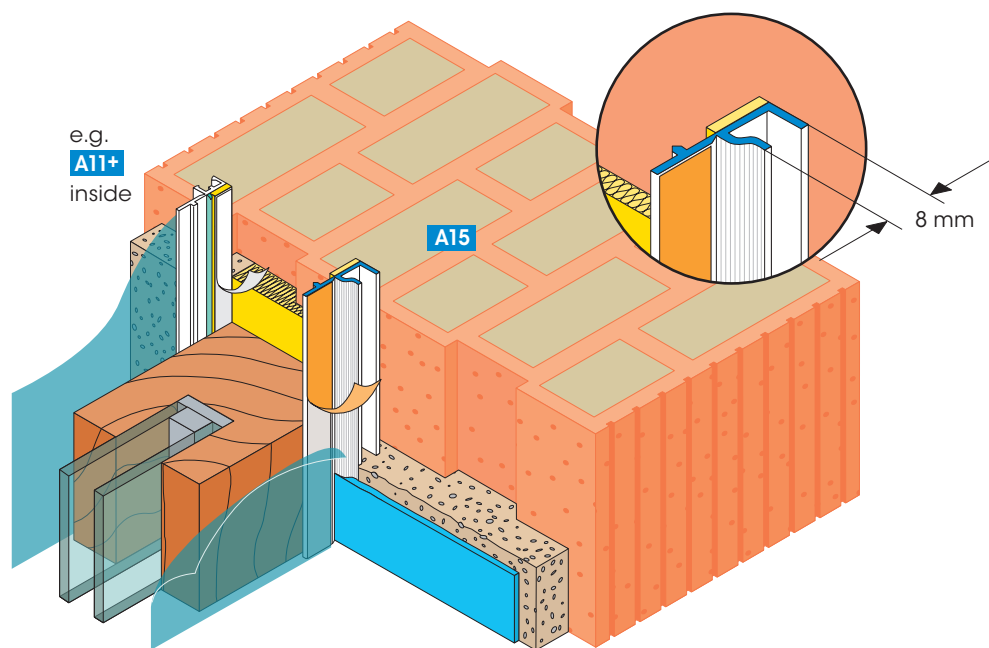
Profiles for interior and exterior plastering

A15



APU Fillet IDEAL

plaster joint to windows, doors and similar component parts



e.g.
A11+
inside

A15

8 mm

Highly efficient insulation for masonry walls with insulating plasters require interior and exterior tight and secure joints to doors, windows and other component parts.

The fillet IDEAL seals against driving rain as a result of pressure at attachment time. The self-adhesive PE Sealing Tape forms a durable UV-resistant movement joint. Colored finishing plasters aligns flush with the Protective Tab.

The plastic fillet IDEAL is the permanent joint between the plaster coating and the component parts. For the plastering work, the on-site protective foil is fixed on the self-adhesive Protective Tab. A neat plaster border is the result on removing the Protective Tab.

Available packed unit:

30 bars of 2.40 m = 72.00 m

For detailed information see technical information sheet or visit us on the Internet at www.apu.ch. The most up-to-date APU-selection criteria are to be adhered to.

