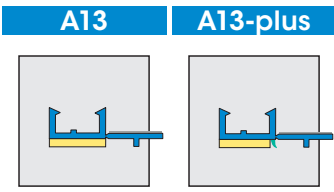
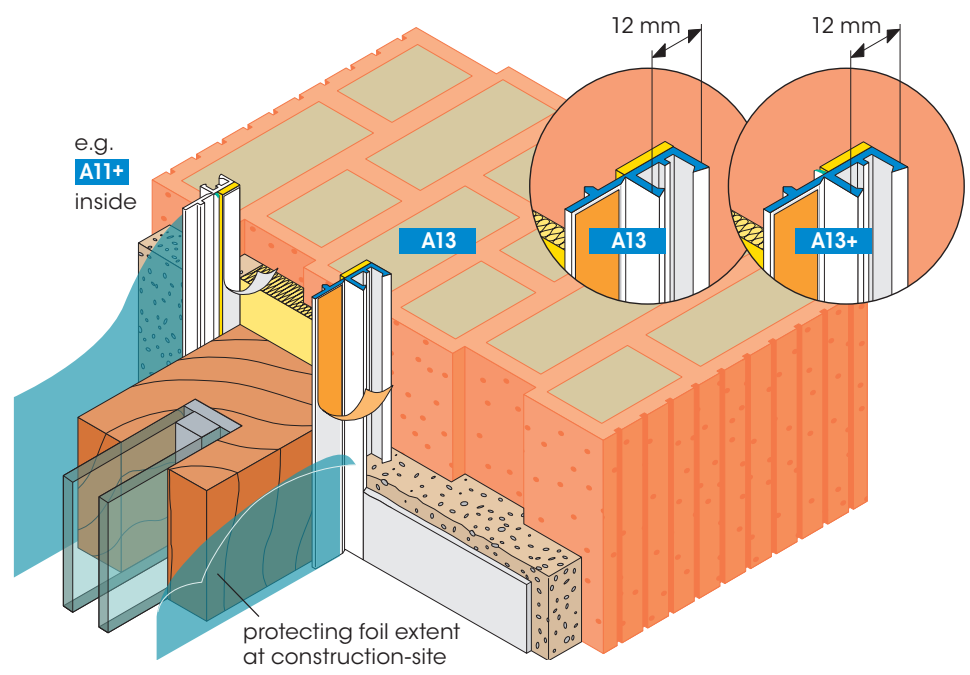


Profiles for interior and exterior plastering



**APU Fillet MIDI (plus)**  
plaster joint to windows, doors and similar component parts



Highly efficient insulation for masonry walls with ground plasters/scratched plasters require interior and exterior tight and secure joints to doors, windows and other component parts.

The fillet MIDI (and MIDI-plus - with a soft Protective Lip) seals against driving rain as a result of pressure at attachment time. The self-adhesive PE Sealing Tape forms a durable UV-resistant movement joint.

The plastic fillet MIDI is the permanent joint between the plaster coating and the component parts. For the plastering work, the on-site protective foil is fixed on the self-adhesive Protective Tab. A neat plaster border is the result on removing the Protective Tab.

**Available packed unit:**  
A13: 30 bars of 2.40 m = 72.00 m  
A13+: 30 bars of 2.50 m = 75.00 m

For detailed information see technical information sheet or visit us on the Internet at [www.apu.ch](http://www.apu.ch). The most up-to-date APU-selection criteria are to be adhered to.