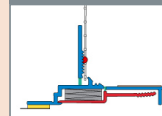




W38 - flex

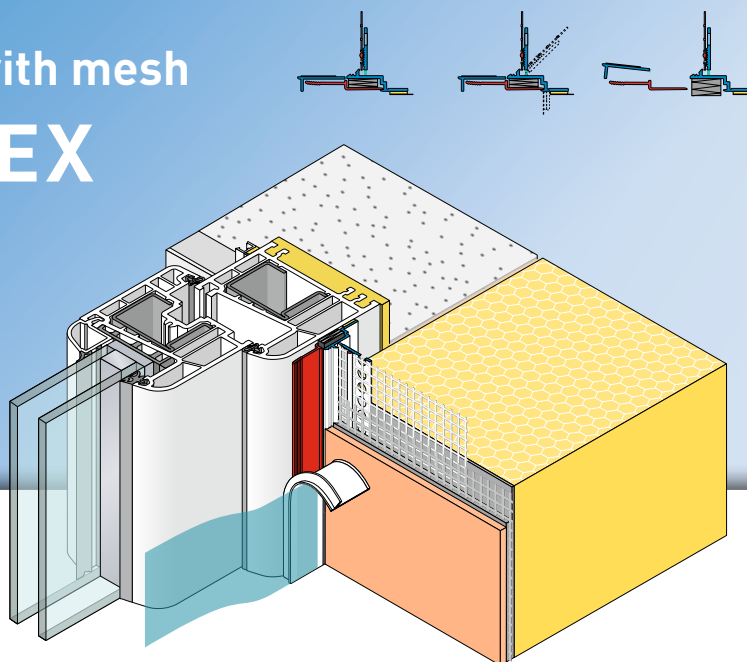


APU®

PROFILES FOR COMPOUND HEAT INSULATION SYSTEMS

Window reveal bead with mesh PUR-FIX-FLEX

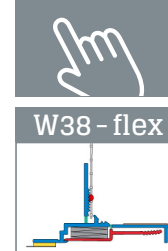
Suitable for various
component connections



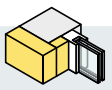
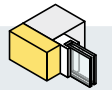

The **APU window reveal bead with mesh PUR-FIX-FLEX** is used in compound heat insulation systems as specified in the latest APU selection criteria. By virtue of its flexible characteristics on the fixation flank and plaster bar it can also be used, for example, for recesses with a lighting wedge, for GFB base and fascia elements beneath parapets, at roof connections and in many other installation situations. What is created after completion of the plastering work is a clean and safe termination of the plaster.

The profile comes with an expanding PUR sealing strip, which ensures a watertight, lasting seal without any sticking directly to the structural element. The PUR sealing strip is impacted lengthways in the profile and has an overhang for sealing the joint. The PUR sealing strip is able to absorb relatively large movements in the area around the joint.

There is a fabric fillet welded onto the flexible plaster bar. This enables the formation of connections with different inclines and angles. Depending on the need for space, the flexible fixation flank can be folded over or removed. Each bar has a fabric overhang on one side of 10cm in the lengthways direction. There is a piece of self-adhesive tape on protective flap in order to secure the third-party protective film. This protects the window ahead of the plastering tasks. After completion of the work the protective flap and the red activation tab are removed and what is created is a clean plaster edge. Thanks to its flexibility the profile can thus be universally used in the area of connections.



Area of application

WINDOW POSITION	 WITHIN MASONRY	 FLUSH WITH MASONRY	 IN FRONT OF MASONRY
Sub-surface	Without adhesive connection – suitable for all standard doors and windows ✓ No test of adhesion required		
Insulating material thickness	up to 400 mm		
Window size	up to 15 mm ²		
W38 PUR-FIX	■	■	■

Tested according to: ■ VDPM leaflet: Class A without adhesive connection ■ Ö-Norm B 6400-2: Class III

Fitting

- 1 The sub-surface must be even, dry, free of dust and suitable for the profile to be fixed on. (Alternatively the profile can also be fixed into the existing insulation using the nails provided with it.)
- 2 Cut the window reveal bead with mesh to length using suitable trimming shears with supporting surface.
- 3 **Profile with fixation flank**
Align the profiles to the component, fix using the PE foam tape and press down firmly on them with your thumbs.
Profile without fixation flank
If there is not enough space for a fixation piece, the fixation flank can be detached. To this end, the insulation must first be fitted in accordance with the manufacturer's instructions. Push the profile in between component and insulation so that the profile is lying directly against the component. Fold mesh away and, using the Z21 plastic nails provided, fix through the round holes in the insulating material.
- 4 Prior to the plastering work, pull off the protective flap's covering paper and stick the third-party protective film to the protective flap's adhesive surface.
- 5 Apply reinforcement base plaster, mesh and final render. The top-level mesh must be run up to the skimming edge.
- 6 When the plastering and painting work has been finished, remove the protective film and pull the protective flap forward off to the front.
- 7 Pull red activation tab out at the side.

Important information

- When the work is being done, the surface temperature must be at least +5 degrees and must not exceed +40 degrees.
- After being set in place on the structural element, profiles with a mesh vane must be promptly embedded. Until then they must be protected from the weather, e.g. sun and wind.
- If the necessary profile length is not available, it is possible in the upper third of the structural element to create a butt joint. While doing so butt the profiles up against each other. The protruding PUR sealing strip seals off the butt joint (shorten if necessary).
- To avoid them becoming unduly hot, profiles, especially dark ones, should be shielded from direct sunlight when in storage and prior to being plastered over.
- The processing guidelines of the plaster manufacturer shall be complied with.