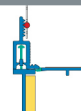




W26



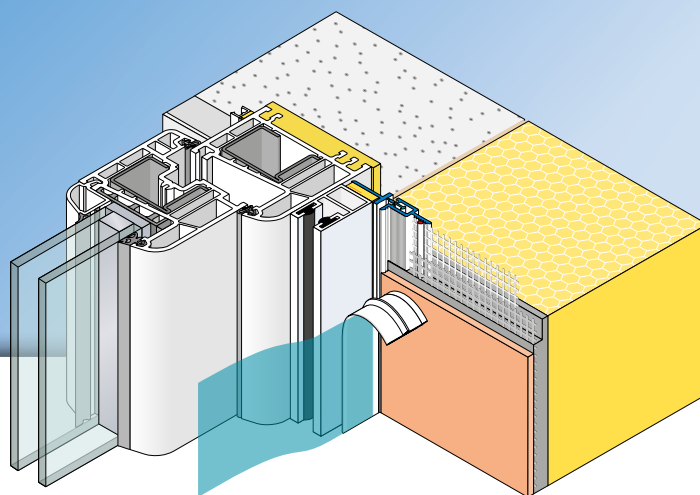
APU®

PROFILES FOR EXTERNAL THERMAL INSULATION COMPOSITE SYSTEMS (ETICS)

Telescopic window reveal bead

IDEAL-R

With 12.5 cm mesh

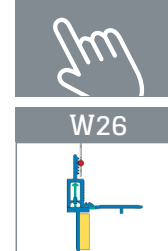


The **APU telescopic window reveal bead IDEAL-R** is used in external thermal insulation composite systems (ETICS) in accordance with the current APU selection criteria.

The profile is bonded laterally into the reveal to the existing roller shutter guide rail. After completion of the rendering work it provides a clean and secure termination of the plaster.

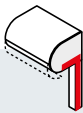
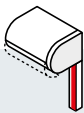

The profile comes with a self-adhesive PE foam tape, which ensures a watertight, lasting seal.

Once the protective strip has been removed, the integrated flexible telescopic section can absorb movement in the connection area. A fabric strip is welded to the profile. Each bar has a fabric overhang on one side of 10 cm in the lengthways direction. There is a piece of self-adhesive tape on protective flap in order to secure the third-party protective film. This protects the window during the plastering work. After completion of these tasks, the protective flap is pulled off and what is created is a clean edge to the plaster.



W26

Area of application

INSTALLATION POSITION	 SIDE CONNECTION	 FRONTAL CONNECTION	 ROLLER SHUTTER BOX CONNECTION
Sub-surface	With adhesive bond – only for substrates that are suitable for bonding ! Bonding test required		
Insulating material thickness	Up to 300 mm		
Window size	Up to 10 m ²		
W26 IDEAL-R	■	See window reveal beads	See product documents W81

Tested in accordance with: ■ VDPM information sheet: Class A with adhesive bond ■ ÖNorm B 6400-2: Class III

Fitting

- 1 Perform adhesion test.
▶ See general tips – APU test of adhesion
- 2 Cut the window reveal bead with mesh to length using suitable trimming shears.
- 3 Pull back the protective flap at top and bottom along the line by about 5 cm (makes removal later easier).
- 4 Pressing firmly with your thumbs, stick on the profiles flush and evenly spaced along the entire length to the side of the roller shutter guide rail. To do this, pull off the covering paper of the self-adhesive PE foam tape.
- 5 Fit insulation as per manufacturer's specifications.
- 6 Prior to the plastering work, pull off the protective flap's covering paper and affix the third-party protective film for protecting the window to the adhesive surface.
- 7 Apply reinforcement base plaster, mesh and final render.
The surface mesh must be run up to the skimming edge.
- 8 When the plastering and painting work has been finished, remove the protective film.
Fold the protective flap forward and backward along its entire length, hold by the pulled back ends and pull it off to the front.

Important information

- Applications not clearly described in the documentation may only be carried out after consulting the render or ETICS system manufacturer.
- When the work is being done, the surface temperature must be at least +5 degrees and must not exceed +40 degrees.
- After being set in place on the structural element, profiles with a mesh vane must be promptly embedded. Until then they must be protected from the weather, e.g. sun and wind.
- If the necessary profile length is not available, it is possible in the upper third of the structural element to create a butt joint by butting the profiles up against each other.
- The processing guidelines of the plaster manufacturer are to be complied with.