



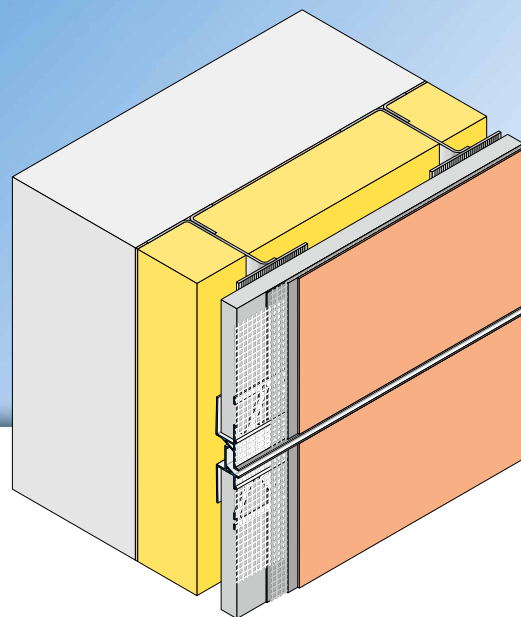
V83

**APU**<sup>®</sup>

PROFILES FOR COMPOUND HEAT INSULATION SYSTEMS

## Joint profile VHF-PRO-TEX

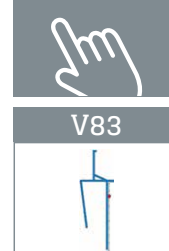
12 mm,  
for back-ventilated rainscreens



For back-ventilated rainscreens the **APU joint profile VHF-PRO-TEX** is used as a termination onto the edge of the supporting board. In combination with the VHF-DROP-TEX (V82) joint profile the area boundary joint is thus formed horizontally and vertically and a clean plaster edge with shadow gap is created.

The profile has a punched plaster bar. Welded onto the bar is a fabric strip. Each bar has a fabric overhang on one side of 10cm in the lengthways direction. For improved hold, the rear limb is pre-tensioned.

What is created after completion of the plastering work is a clean termination of the plaster.



## Verarbeitung

- ❶ Using appropriate trimming shears with supporting surface, cut profile to the desired size.
- ❷ The width of the joint between the V82 and V83 profiles should be matched to the expected deformation.
- ❸ Put the profile on the one side on the existing base board and push it towards the other end onto the board.
- ❹ Apply reinforcement base plaster over the full area. In doing so, pull the mesh up to the plaster edge and trim.
- ❺ After leaving to stand for the required time, apply final render.

## Wichtige Hinweise

- When the work is being done, the surface temperature must be at least +5 degrees and must not exceed +40 degrees.
- After being set in place on the structural element, profiles with a mesh vane must be promptly embedded. Until then they must be protected from the weather, e.g. sun and wind.
- The surface mesh to be subsequently attached must be run up to the skimming edge of the profile.
- The processing guidelines of the plaster manufacturer shall be complied with.