



A17-plus

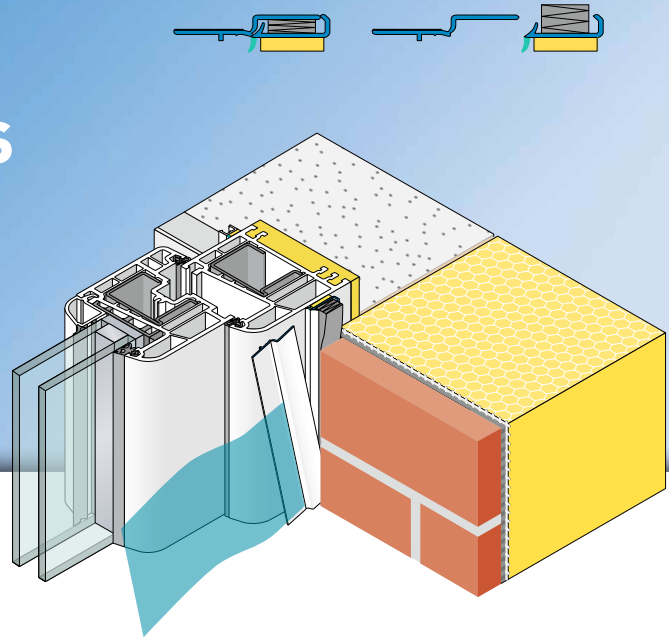


APU®

PLASTER JOINT PROFILES FOR INTERIOR AND EXTERIOR PLASTERING

Window reveal bead ELASTIK-plus

17 mm, with protective lip



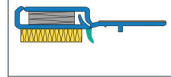
The **APU window reveal bead ELASTIK-plus** is used in the reveal on clinker façades or two-skin masonry.

The profile comes with a self-adhesive PE foam tape, which ensures a watertight, lasting seal. A TPE protective lip protects the PE foam tape and forms

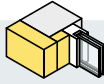
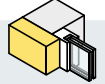

a visually clean termination with the structural element. The integrated expanding PUR sealing strip is able to absorb relatively large movements in the area around the joint. When the work is finished, this gets activated by removing the protective flap and covering tab. The result is a clean finish with the component.



A17-plus



Area of application

WINDOW POSITION	 WITHIN MASONRY	 FLUSH WITH MASONRY	 IN FRONT OF MASONRY
Sub-surface	With adhesive connection – only for surfaces suitable for being stuck to ! Test of adhesion required		
Insulating material thickness	up to 300 mm		
Window size	up to 10 m ²		
A17 ELASTIK	■	■	■

Tested according to: ■ VDPM leaflet: Class A with adhesive connection ■ Ö-Norm B 6400-2: Class III

Fitting

- The sub-surface must be even, dry, free of dust and suitable for the profile to be stuck on permanently.
Any residues that would impair adhesion must be removed.
- Perform adhesion test.
▶ See general tips – APU test of adhesion
- Cut the window reveal bead to length using suitable trimming shears with supporting surface.
- Pull back the protective flap at top and bottom along the line by about 5 cm (makes removal later easier).
- The vertical profiles get put on first. As you do so, release the profiles' protective flap. Pressing firmly with your thumbs, stick on the profiles aligned with and at an equal distance from the frame profile across the entire length. To do this, pull off the covering paper of the self-adhesive PE foam tape. The profiles must be mitred in the upper corner area.
In the case of hinges, cut into protective flap and fold over.
- Mitre-cut the transverse profile and fit into place.
- Prior to the façade work, pull off the protective flap's covering paper and affix the third-party protective film for protecting the window to the adhesive surface.
- When the façade work is finished, remove the protective film.
Fold the protective flap forwards and back along the complete length, hold at the previously ripped points and with the covering tab pull out forwards.

Important information

- When the work is being done, the surface temperature must be at least +5 degrees and must not exceed +40 degrees.
- If the necessary profile length is not available, it is possible in the upper third of the structural element to create a butt joint by butting the profiles up against each other.
- Where adhesive profiles form a seal through the PE foam tape, we recommend closing the bottom window groove with a suitable sealant.
- To avoid them becoming unduly hot, profiles, especially dark ones, should be shielded from direct sunlight when in storage and prior to being plastered over.
- The processing guidelines of the plaster manufacturer shall be complied with.