



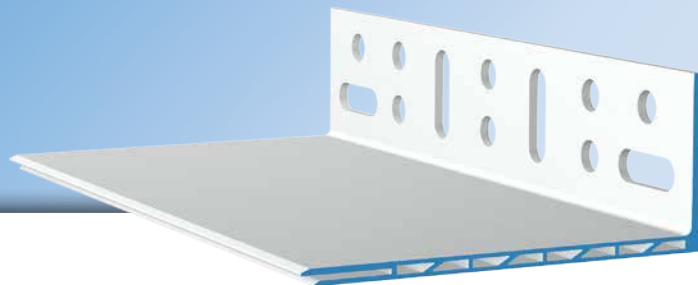
Z25



APU[®]

PROFILES FOR EXTERNAL THERMAL INSULATION COMPOSITE SYSTEMS

Base Rail Z-FOAM



The **Base Rail APU Z-FOAM Z25** made of foamed plastic with a Z-shaped hollow chamber structure forms the lower termination of a wall insulation system in combination with the W66 base edge profile.

The Base Rail is available in three different projection lengths (50, 100 and 160 mm) and is fixed to the wall. In combination with the Base Edge Profile W66 and the Extension Rail Z23 it can be used flexibly for insulation thicknesses of up to 300 mm. For this purpose, the W66 is inserted into the existing receiving channel. This can be individually adapted using the corresponding predetermined break points in the support flange. This results in a closed version. If perimeter insulation is present, the Base Edge Profile can be inserted flexibly as an open version between the Base Rail and the wall insulation. An overlap of the profiles of at least 20 mm is required.



Z25



Version

	ARTICLE NO.	LENGTH	PACKAGING UNIT
Base Rail Z-FOAM Z25			
Z25			
50 mm (50 - 90 mm)	Z25-2005	2.0 m	10 bars = 20 m
100 mm (100 - 140 mm)	Z25-2010	2.0 m	10 bars = 20 m
160 mm (160 - 200 mm)	Z25-2016	2.0 m	10 bars = 20 m

Ausstattung

	BASE RAIL Z-FOAM Z25
Material	■ Rigid PVC, foamed, manufactured in accordance with DIN 16941
Combined with	■ W66-0 Base Edge Profile SOKA-TEX-ZERO ■ W66-1 Base Edge Profile SOKA-TEX-UNO ■ W66-2 Base Edge Profile SOKA-TEX-DUE ■ W66-4 Base Edge Profile SOKA-TEX-QUATTRO ■ Extension Rail Z23 for W66
Accessory	■ Joint Connector Z62

Important information

Storage	Always store profiles dry and flat.
Other applications	Applications not clearly described in the documentation may only be carried out after consulting the manufacturer of the render or ETICS system.
Perimeter insulation	For insulation thicknesses of 200 mm or more, perimeter insulation is required.

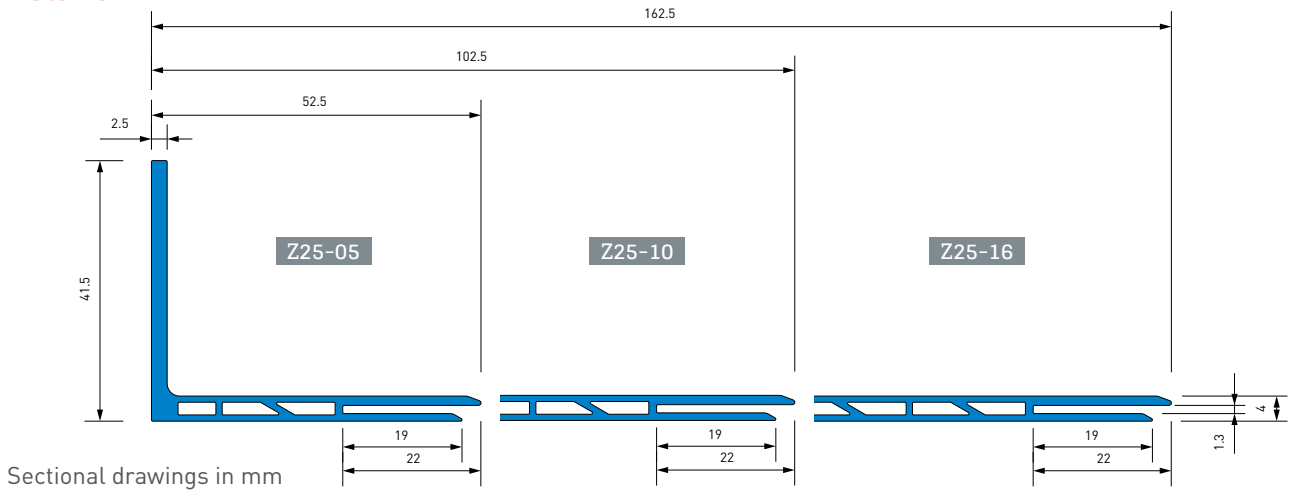
For information on materials, areas of application, testing and correct use, please refer to our General Information sheet.



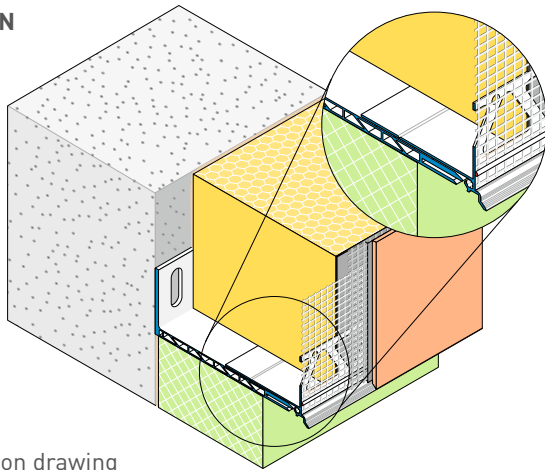
Z25



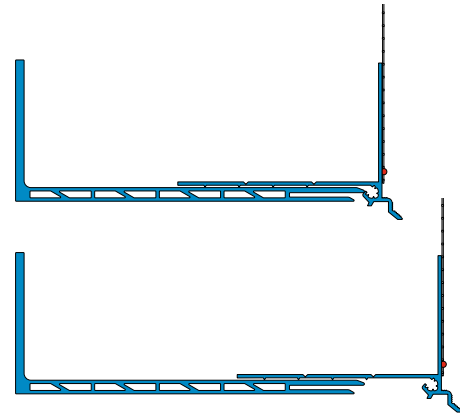
Details



OPEN VERSION

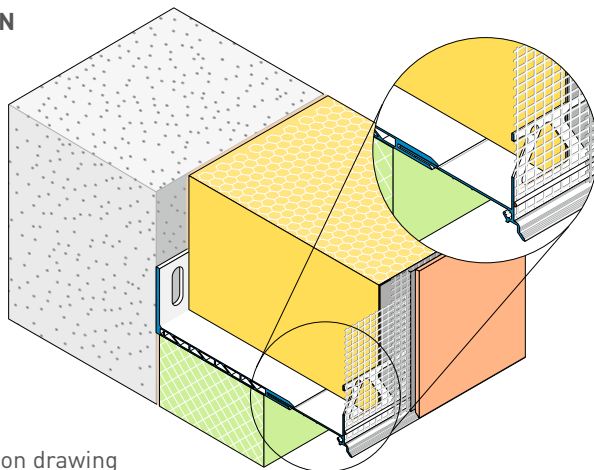


Application drawing

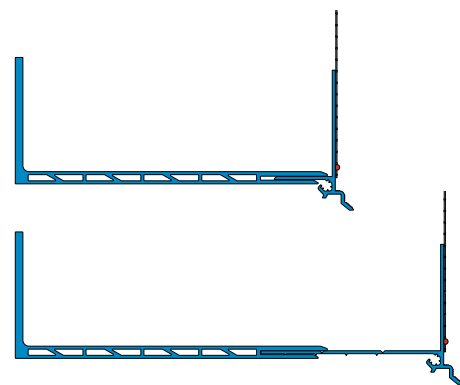


Function

CLOSED VERSION



Application drawing



Function