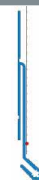




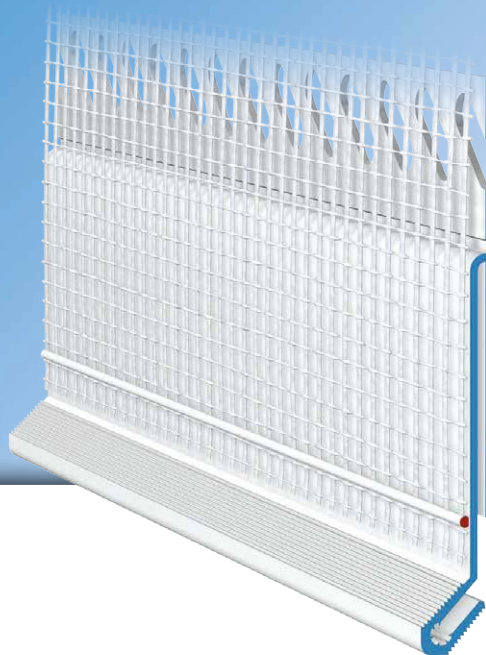
W45-11

**APU**<sup>®</sup>

PROFILES FOR COMPOUND HEAT INSULATION SYSTEMS

## Flashing bead **FIN-TEX**

With 12.5 cm mesh

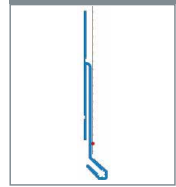


The **APU flashing bead FIN-TEX** is used at junction points with metal plate in compound heat insulation systems (e.g., at junctions with the roof's edge) and as a result of its cavity design produces a flexible connection between plaster and metal. The profile is used for 11 mm plaster thickness and upon completion of the plastering work ensures that water is accurately guided away.

The profile has a welded fabric strip. Each bar has a fabric overhang on one side of 10cm in the lengthways direction. The included plug connectors (Z13) enable the profiles to be joined and fitted very precisely and flush. What is created after completion of the plastering work is a clean termination of the plaster.



W45-11



## Design

	ITEM NO.	LENGTH	PACKAGING UNIT	WEIGHT (per PU)
--	----------	--------	----------------	-----------------

### FIN-TEX flashing bead

W45-11 With 12.5 cm mesh	W45-2011	2.0 m	25 bars = 50 m	11.2 kg
-----------------------------	----------	-------	----------------	---------

## Features

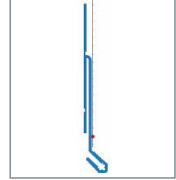
	FIN-TEX FLASHING BEAD
Material	<ul style="list-style-type: none"> <li>■ Rigid PVC manufactured under DIN-16941</li> </ul>
Mesh	<ul style="list-style-type: none"> <li>■ Min. 160 g/m<sup>2</sup> approved for compound heat insulation systems</li> <li>■ 12.5 cm wide – MW 4 x 4 mm</li> <li>■ Ultrasonic welded</li> </ul>
Accessories	<ul style="list-style-type: none"> <li>■ Z13-0000 Plug connectors (1 bag)</li> </ul>

## Important information

Storage	Always store profiles laid down in a dry place.
Other applications	Any applications not clearly described in the documents may be implemented only after consultation with the plaster or ETICS manufacturer.
Movement	Stick profiles for movement absorption onto the sheet metal, providing a clearance of 10mm.
Flashing strip	Where the profiles are used above 3m length, a flashing strip must be used above the sheet metal.
For information on materials, areas of use, tests and correct application, please refer to our 'General Advice and Information'	

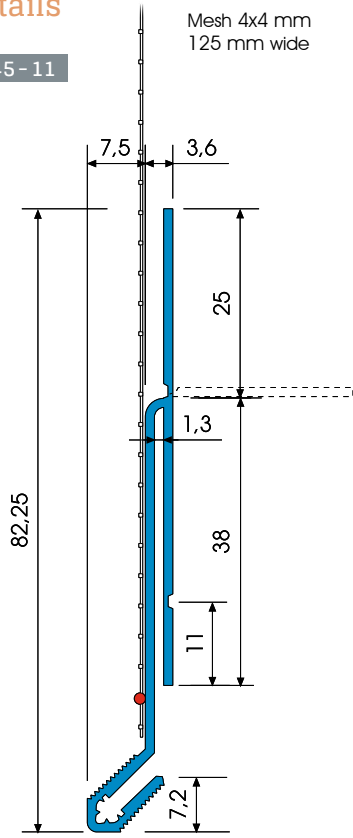


W45-11

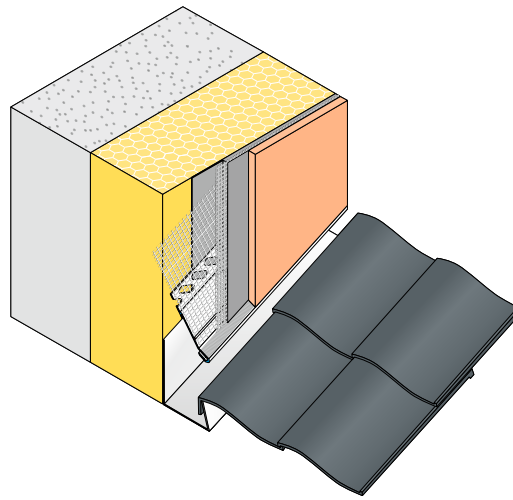


## Details

W45-11



Sectional drawing in mm



Application drawing