



W42

**APU**[®]

PROFILES FOR COMPOUND HEAT INSULATION SYSTEMS

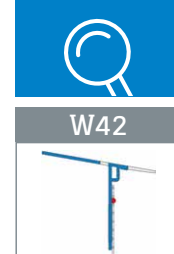
Stop bead with mesh

FEBA-TEX-UNI

With soft drip edge and
12.5 cm mesh

The **APU stop bead with mesh FEBA-TEX-UNI** is used in compound heat insulation systems. When a second sealant layer is being created, it forms a clean plaster termination under the window sill.

The profile has 2 plastic wings. As a result of the specified profile contour the required slope of at least 5 degrees is adhered to around the window sill. The top wing, which has no holes, is for applying a suitable sealing film. It is connected together with a soft connection and can thus be flexibly adapted to the appropriate angle of slope. The bottom wing has holes. There is a fabric window reveal bead welded onto the profile. Each bar has a fabric overhang on one side of 10cm in the lengthways direction. Using the plug connectors (Z14) provided, the profiles can be aligned together flush where they butt up with each other. The soft, transparent drip edge accurately guides water away.



Design

	ITEM NO.	LENGTH	PACKAGING UNIT	WEIGHT (per PU)
--	----------	--------	----------------	-----------------

FEBA-TEX-UNI stop bead with mesh

W42: With soft drip edge and 12.5 cm mesh	W42-2000	2.0 m	15 bars = 30 m	4.7 kg
---	-----------------	-------	----------------	--------

Features

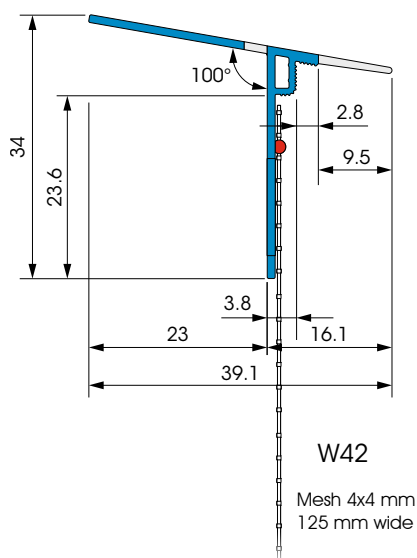
	FEBA-TEX-UNI STOP BEAD WITH MESH
Material	<ul style="list-style-type: none"> ■ Rigid PVC manufactured under DIN 16941 ■ Soft PVC – transparent
Seal	<ul style="list-style-type: none"> ■ By others
Mesh	<ul style="list-style-type: none"> ■ Min. 160 g/m² approved for compound heat insulation systems ■ MW 4x4 mm ■ Ultrasonic welded
Accessories	<ul style="list-style-type: none"> ■ Z14-0000 Plug connectors (1 bag)

Important information

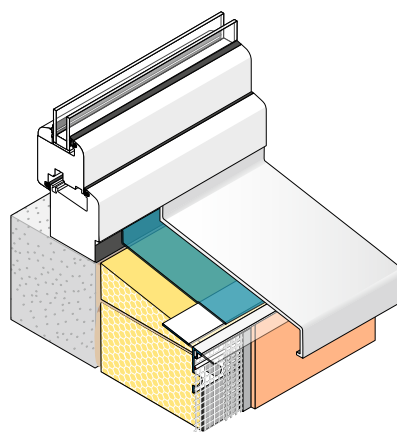
Storage	Always store profiles laid down in a dry place.
Other applications	Any applications not clearly described in the documents may be implemented only after consultation with the plaster or ETICS manufacturer.

For information on materials, areas of use, tests and correct application, please refer to our 'General Advice and Information'

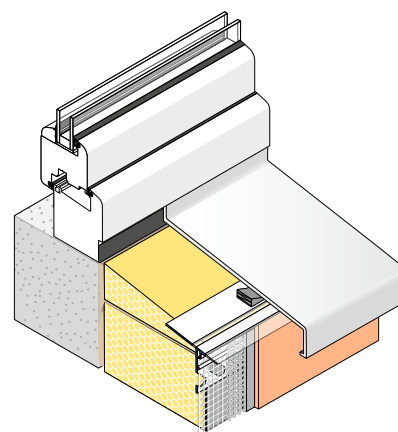
Details



Sectional drawing in mm



Application drawing of variant 1
Design 2 Sealing layer with sealing film



Application drawing of variant 2
Carrying out retrospective installation