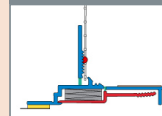




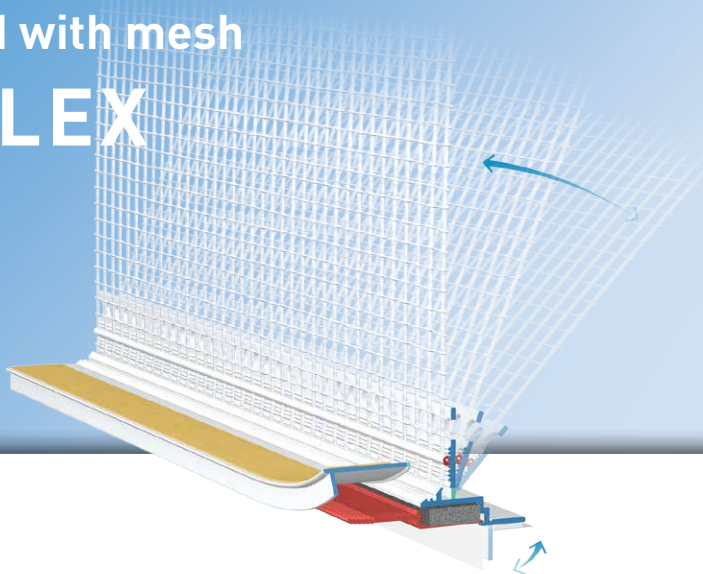
W38 - flex

**APU®**

PROFILES FOR COMPOUND HEAT INSULATION SYSTEMS

Window reveal bead with mesh **PUR-FIX-FLEX**

Suitable for various
component connections



The **APU window reveal bead with mesh PUR-FIX-FLEX** is used in compound heat insulation systems as specified in the latest APU selection criteria. By virtue of its flexible characteristics on the fixation flank and plaster bar it can also be used, for example, for recesses with a lighting wedge, for GFB base and fascia elements beneath parapets, at roof connections and in many other installation situations. What is created after completion of the plastering work is a clean and safe termination of the plaster.

The profile comes with an expanding PUR sealing strip, which ensures a watertight, lasting seal without any sticking directly to the structural element. The PUR sealing strip is impacted lengthways in the profile and has an overhang for sealing the joint. The PUR sealing strip is able to absorb relatively large movements in the area around the joint. There is a fabric fillet welded onto the flexible plaster bar. This enables the formation of connections with different inclines and angles.

Depending on the need for space, the flexible fixation flank can be folded over or removed. Each bar has a fabric overhang on one side of 10cm in the lengthways direction. There is a piece of self-adhesive tape on protective flap in order to secure the third-party protective film. This protects the window ahead of the plastering tasks.

After completion of the work the protective flap and the red activation tab are removed and what is created is a clean plaster edge.

Thanks to its flexibility the profile can thus be universally used in the area of connections.



Design

	ITEM NO.	LENGTH	PACKAGING UNIT	WEIGHT (per PU)
--	----------	--------	----------------	-----------------

PUR-FIX-FLEX window reveal bead with mesh

W38-flex				
With 12.5cm mesh	W38-24FLEX	2.4 m	25 bars = 60 m	12.5 kg

Features

	PUR-FIX-FLEX WINDOW REVEAL BEAD WITH MESH
Material	<ul style="list-style-type: none"> ■ Rigid PVC manufactured under DIN-16941 ■ TPE manufactured under DIN-16941
Protective flap	<ul style="list-style-type: none"> ■ Detachable with soft TPE connection and double-sided adhesive tape
Fixation	<ul style="list-style-type: none"> ■ PE foam tape 6 x 1 mm ■ alternatively Z21 plastic nails
Seal	<ul style="list-style-type: none"> ■ PUR sealing tape, 10 mm, type BG1 ■ Watertight for joints of approx. 6 mm
Mesh	<ul style="list-style-type: none"> ■ Min. 160 g/m² approved for compound heat insulation systems ■ MW 4 x 4 mm ■ Ultrasonic welded
Accessories	<ul style="list-style-type: none"> ■ Z21-0000 plastic nails
Inspections	<ul style="list-style-type: none"> ■ VDPM leaflet: Class A without adhesive connection ■ Ö-Norm 6400-2: Class III

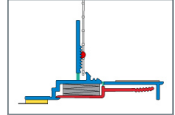
Important information

Storage	Always store profiles laid down in a dry place.
Test of adhesion	No test of adhesion required.
Other applications	Any applications not clearly described in the documents may be implemented only after consultation with the plaster or ETICS manufacturer.
Selection criteria	Adhere to the latest APU selection criteria. ▶ see APU selection criteria

For information on materials, areas of use, tests and correct application, please refer to our 'General Advice and Information'

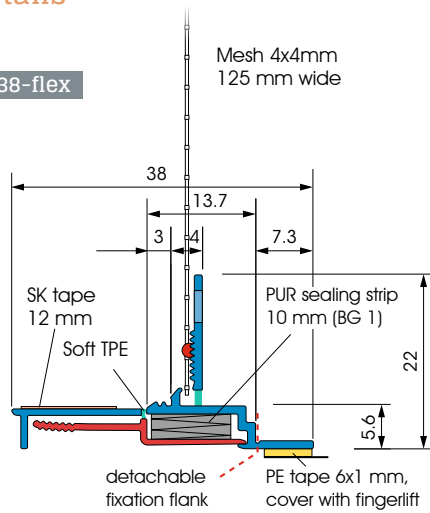


W38 - flex

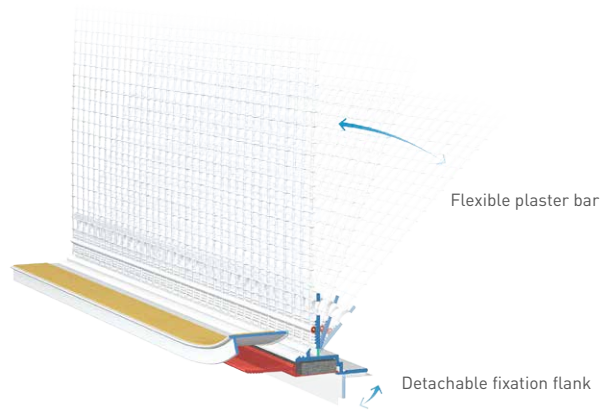


Details

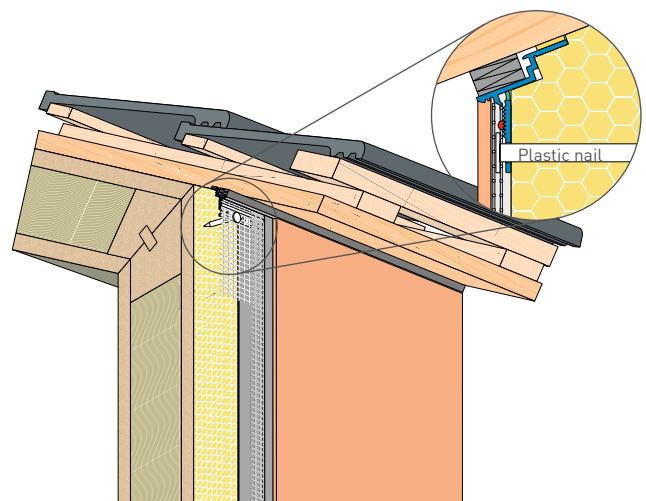
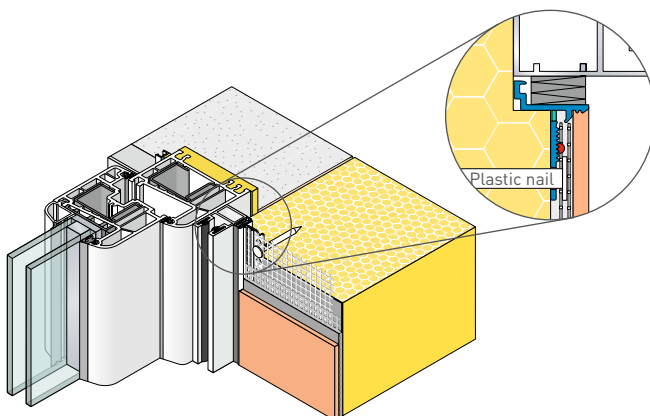
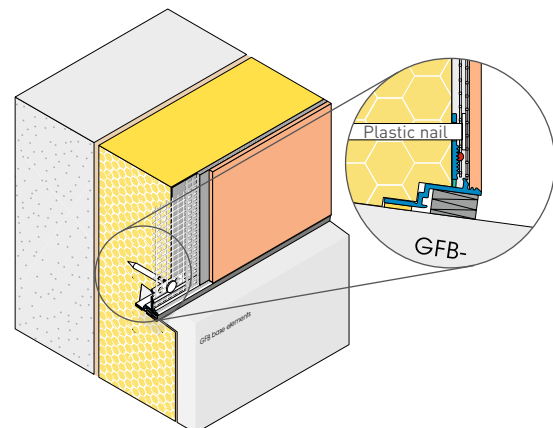
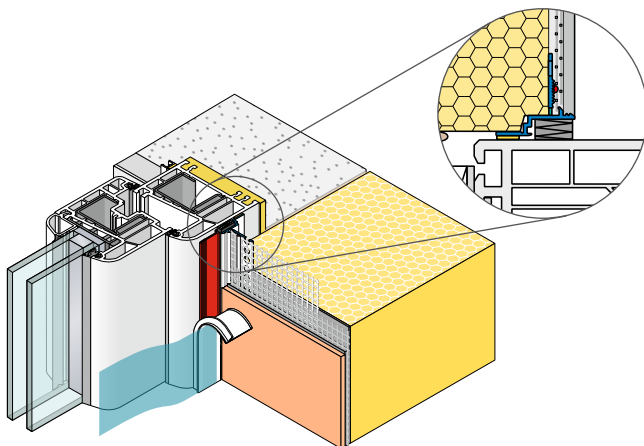
W38-flex



Sectional drawing in mm



Function



Application drawings