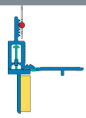




W26

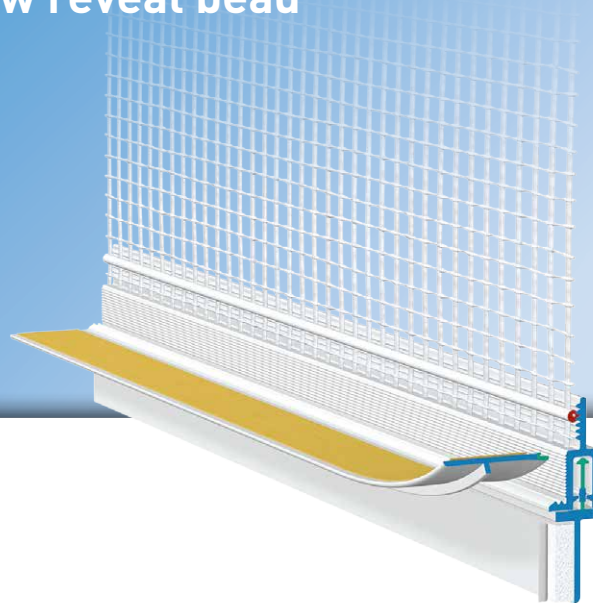
**APU[®]**

PROFILES FOR EXTERNAL THERMAL INSULATION COMPOSITE SYSTEMS (ETICS)

Telescopic window reveal bead

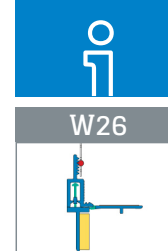
IDEAL-R

With 12.5 cm mesh



The **APU telescopic window reveal bead IDEAL-R** is used in external thermal insulation composite systems (ETICS) in accordance with the current APU selection criteria. The profile is bonded laterally into the reveal to the existing roller shutter guide rail. After completion of the rendering work it provides a clean and secure termination of the plaster.

The profile comes with a self-adhesive PE foam tape, which ensures a watertight, lasting seal. Once the protective strip has been removed, the integrated flexible telescopic section can absorb movement in the connection area. A fabric strip is welded to the profile. Each bar has a fabric overhang on one side of 10 cm in the lengthways direction. There is a piece of self-adhesive tape on protective flap in order to secure the third-party protective film. This protects the window during the plastering work. After completion of these tasks, the protective flap is pulled off and what is created is a clean edge to the plaster.



Design

	ARTICLE NO.	LENGTH	PACKAGING UNIT	WEIGHT (per unit)
--	-------------	--------	----------------	----------------------

Telescopic window reveal bead IDEAL-R

W26				
With 12.5 cm mesh	W26-2400	2,4 m	25 bars = 60 m	

Features

	TELESCOPIC WINDOW REVEAL BEAD IDEAL-R
Material	<ul style="list-style-type: none">■ Rigid PVC, manufactured in accordance with DIN 16941■ TPE, manufactured in accordance with DIN 16941
Protective flap	<ul style="list-style-type: none">■ Removable, with double-sided self-adhesive tape
Features	<ul style="list-style-type: none">■ Telescopic section with flexible TPE connection
Seal	<ul style="list-style-type: none">■ PE foam tape, 11 x 3 mm
Mesh	<ul style="list-style-type: none">■ Min. 160g/m², approved for use in ETICS■ 12.5 cm wide, mesh size 4 x 4 mm■ ultrasonically welded

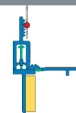
Features

Storage	Always store profiles dry and flat.
Sub-surface	<p>The sub-surface must be even, dry, free of dust and suitable for the profile to be stuck on permanently.</p> <p>Any residues that would impair adhesion must be removed.</p>
Adhesion test	<p>Perform adhesion test.</p> <p>► See general tips – APU test of adhesion</p>

For information on materials, areas of application, testing, and correct use, please refer to our General Information sheet.

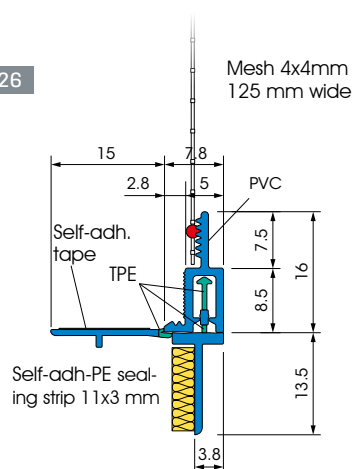


W26

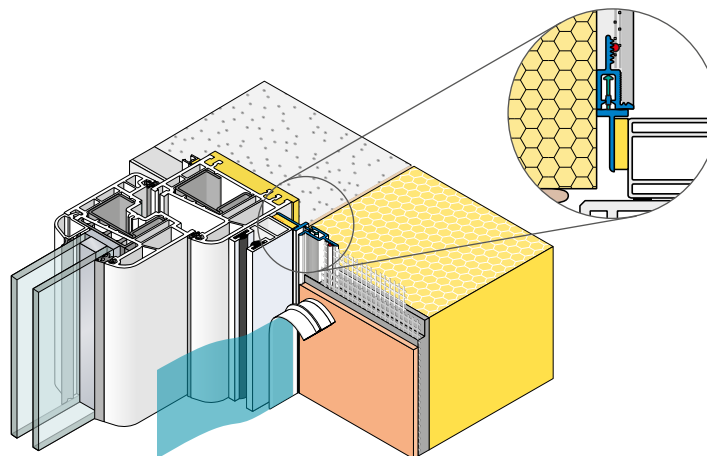


Details

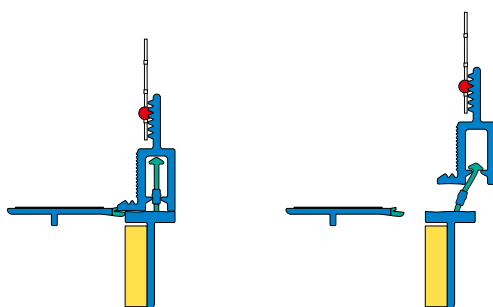
W26



Sectional drawing in mm



Application drawing



Function