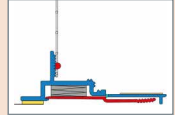




A 38 - pro

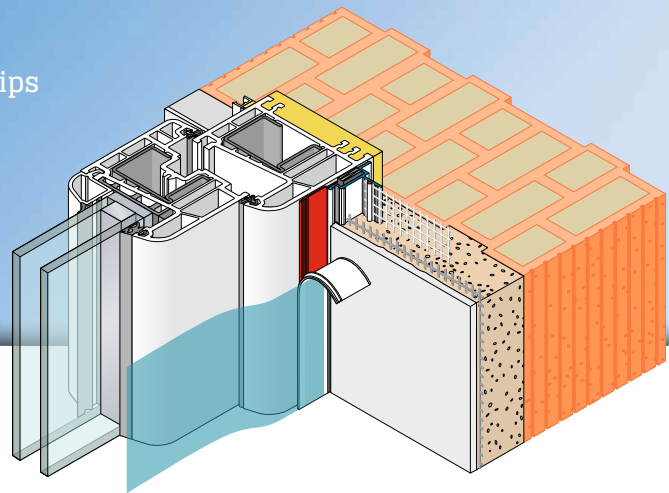


APU®

PLASTER JOINT PROFILES FOR INTERIOR AND EXTERIOR PLASTERING

Window reveal bead PUR-FIX-pro

With shadow gap and 5.0 cm mesh strips



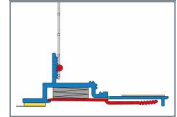
The **APU window reveal bead PUR-FIX-pro** is used with indoor and outdoor plaster systems as specified by the latest APU selection criteria. Within the reveal the profile is fixed flush to the structural element there and after completion of the plastering work forms a clean and reliable termination of the plaster with a shadow gap.

The profile comes with an expanding PUR sealing strip, which ensures a watertight, lasting seal without any sticking directly to the structural element. The PUR sealing strip is impacted lengthways and has an overhang for sealing the joint. The

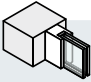
PUR sealing strip is able to absorb relatively large movements in the area around the joint. There is a fabric window reveal bead welded onto the profile. It provides added reliability for the interlocking within the plaster. There is a piece of self-adhesive tape on protective flap in order to secure the third-party protective film. This protects the window during the plastering work. After completion of the work the protective flap and the red activation tab are removed and what is created is a clean plaster edge. The profile is thus suitable for all standard windows and doors and can be universally used.



A 38 - pro



Area of application

WINDOW POSITION	 WITHIN MASONRY
Sub-surface	Without adhesive connection – suitable for all standard doors and windows ✔ No test of adhesion required
Window size	up to 15 m ²
A38 PUR-FIX	●

Fitting

- ❶ The sub-surface must be even, dry, free of dust and suitable for the profile to be fixed on.
- ❷ Cut the window reveal bead to length using suitable trimming shears with supporting surface.
- ❸ Pull back the protective flap at top and bottom along the line by about 5 cm (makes removal later easier).
- ❹ Put on the vertical window reveal bead with meshes first. To do this, align the profiles and, using the PE foam tape, fix them to the component and press down firmly on them with your thumbs. The profiles must be mitred in the upper corner area.
- ❺ Mitre-cut the transverse profile and fit into place.
- ❻ Prior to the plastering work, pull off the protective flap's covering paper and affix the third-party protective film for protecting the window to the adhesive surface.
- ❼ When the plastering and painting work has been finished fold the protective flap forward and backward along its entire length, hold by the pulled back ends and pull it off to the front.
- ❽ Pull red activation tab out at the side.

Important information

- When the work is being done, the surface temperature must be at least +5 degrees and must not exceed +40 degrees.
- If the necessary profile length is not available, it is possible in the upper third of the structural element to create a butt joint by butting the profiles up against each other.
- To avoid them becoming unduly hot, profiles, especially dark ones, should be shielded from direct sunlight when in storage and prior to being plastered over.
- The processing guidelines of the plaster manufacturer shall be complied with.