



A17 - plus

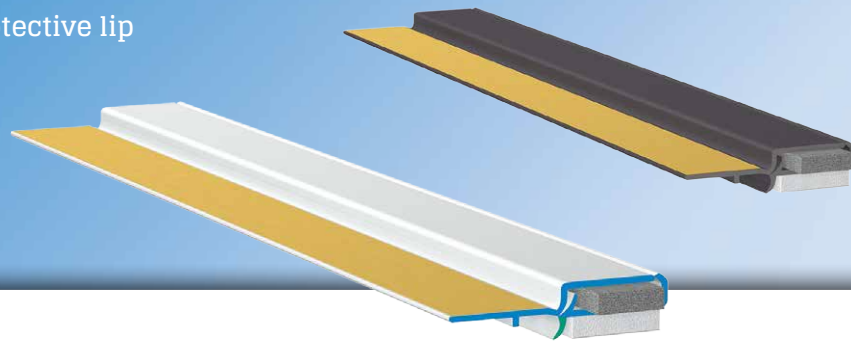


APU®

PLASTER JOINT PROFILES FOR INTERIOR AND EXTERIOR PLASTERING

Window reveal bead ELASTIK-plus

17 mm, with protective lip



The **APU window reveal bead ELASTIK-plus** is used in the reveal on clinker façades or two-skin masonry.

The profile comes with a self-adhesive PE foam tape, which ensures a watertight, lasting seal. A TPE protective lip protects the PE foam tape and forms a visually clean termination with the structural element. The integrated expanding PUR sealing strip is able to absorb relatively large movements in the area around the joint. When the work is finished, this gets activated by removing the protective flap and covering tab. The result is a clean finish with the component.

Design

	ITEM NO.	LENGTH	PACKAGING UNIT	WEIGHT (per PU)
--	----------	--------	----------------	-----------------

Window reveal bead ELASTIK-plus

A17-plus				
17 mm, with protective lip	A17-24PLUS	2.4 m	30 bars = 72 m	9.9 kg
Grey, similar to RAL 7022	A17-24PLUS-7022	2.4 m	30 bars = 72 m	9.9 kg

Features

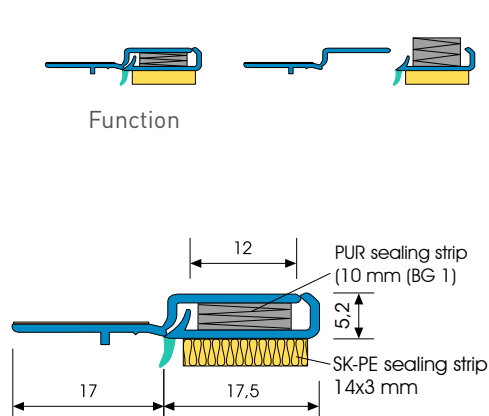
	WINDOW REVEAL BEAD ELASTIK-PLUS
Material	<ul style="list-style-type: none"> ■ Rigid PVC manufactured under DIN-16941 ■ TPE manufactured under DIN-16941
Protective flap	<ul style="list-style-type: none"> ■ Detachable with double-sided adhesive tape
Features	<ul style="list-style-type: none"> ■ PUR sealing strip, 10 mm, type BG1 ■ Watertight for joints of approx. 6 mm
Seal	<ul style="list-style-type: none"> ■ PE foam tape 14x3 mm
Inspections	<ul style="list-style-type: none"> ■ VDPM leaflet: Class A with adhesive connection ■ Ö-Norm 6400-2: Class III

Important information

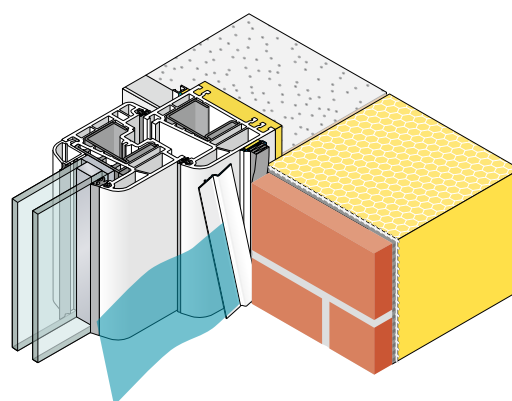
Storage	Always store profiles laid down in a dry place.
Test of adhesion	Perform adhesion test. ▶ See general tips – APU test of adhesion
Other applications	Any applications not clearly described in the documents may be implemented only after consultation with the plaster or ETICS manufacturer.

For information on materials, areas of use, tests and correct application, please refer to our 'General Advice and Information'

Details



Sectional drawing in mm



Application drawing